

# AIR NIPPER





# Contents

- Sliding Air Nippers Horizontal-type ..... 184 - 186
  - Sliding Air Nippers Horizontal-type blades ..... 187 - 188
- Sliding Air Nippers Vertical-type ..... 188
  - Sliding Air Nippers Vertical-type blades ..... 189 - 190
- Thrust-Cut Air Nippers ..... 191
  - Thrust-Cut Air Nipper blades ..... 191
- Heat Air Nippers ..... 192 - 195
- Air Nippers ..... 196 - 199
  - Air Nipper blades ..... 200 - 203
- Air Scissors ..... 204
- Custom-made blades ..... 205

# AIR NIPPER TECHNICAL

Tough aluminum body



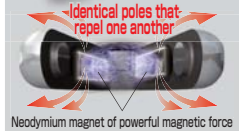
## Standard blades

Blades open and close by a spring repulsion.



## NM blades

Special blade without spring for 24-hour operation; blades open and close by a magnet repulsion.



Air nippers

Model Blade shape

No. **NY10 A J**



- AJ** : Straight blades for plastic ————— **RAJ** : Straight blades for plastic reverse bevel
- AJL** : Straight long blades for plastic
- AJT** : Thin, straight blades for plastic
- AE** : Nipping blades for plastic
- AJY** : Thin, straight blades for plastic
- AD** : Lift blades for plastic
- AH** : Crank blades for plastic ————— **RAH** : Crank blades for plastic reverse bevel
- AJB** : Straight blades for plastic, a brazed carbide tip
- AJV** : V shaped straight blades for plastic
- AJH** : Straight blades for plastic, a brazed high-speed steel tip
- BJ** : Straight thin blades for metal ————— **RBJ** : Straight thin blades for metal reverse bevel

## For more precise gate-cutting:



### Heat air nippers

These nippers perform cutting by applying heat to the blade edges. They are good for cutting acrylic lens.

194P



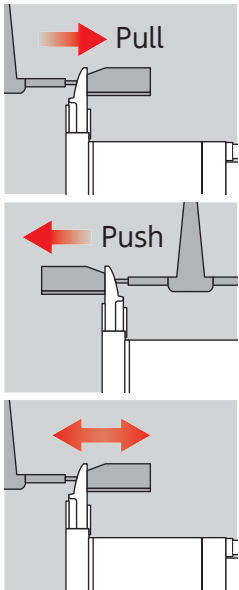
### Heat air nippers Thrust-cut type

Cutting by the application of heat; thrust-cutting type ensuring a clean, unblemished cut surface constantly.

193P

## Slide-off air nippers

The main unit of the nipper slides and the blade comes into intimate contact with a gate, enabling to cut it without resin residue.



### Pull/Push

A wide selection of models can support various applications. Possible to fix the highly precise positioning against the gate as there is less rattling or deflection.

185P

### Double action type

Slide mechanism not using a spring ensures smooth action. It is free from concerns about spring wear or metal fatigue, resulting in high durability.

186P

## Square type

Provided with threaded holes on the 5 faces of the main unit. Suitable for incorporating into a machine or equipment.

197P

## Round type

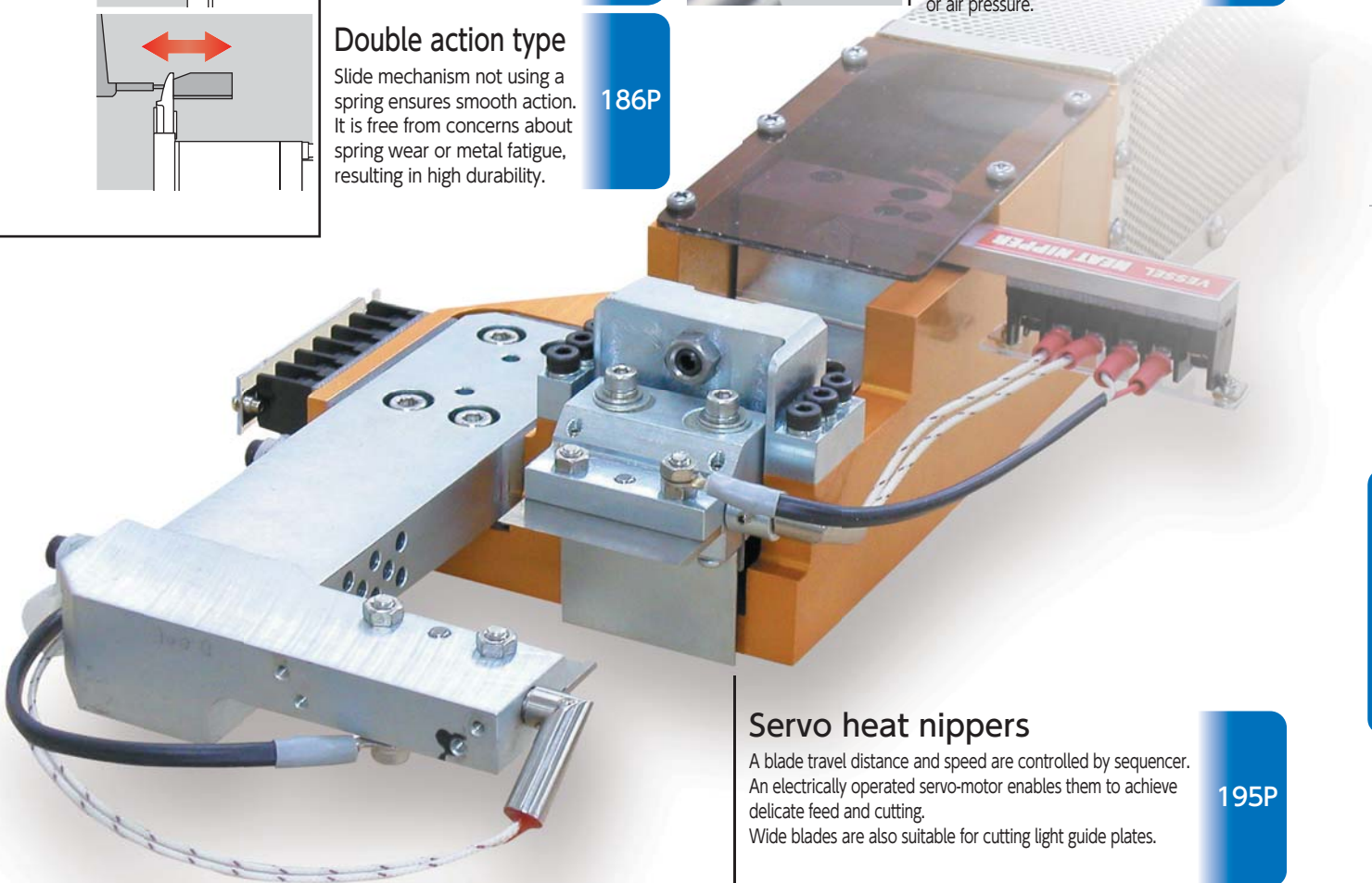
Possible to adjust freely the mounting angle by a stand (option). Suitable for installation on a robotic arm or chuck plate.

198P

## Extra Pressure Booster

Installing this unit on either square or round air nipper enables a pressure to be boosted. Ideal for applications where the radical pressure cannot be attained because of installation space or air pressure.

198P



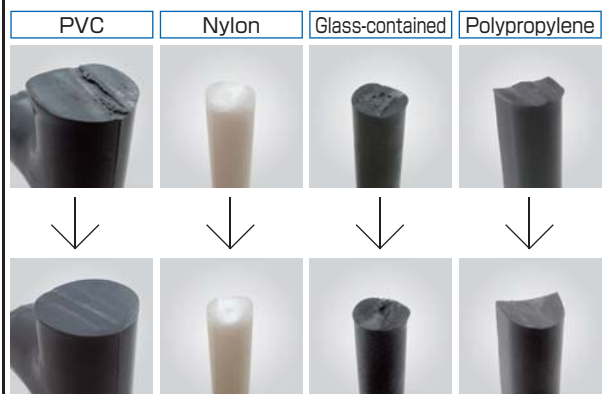
## Servo heat nippers

A blade travel distance and speed are controlled by sequencer. An electrically operated servo-motor enables them to achieve delicate feed and cutting. Wide blades are also suitable for cutting light guide plates.

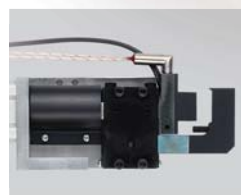
195P

## Differences in the cut surfaces when using heat nippers

Standard Blades  
(Not Heat Nipper)



Heat Nippers



## Air-hydro nippers Thrust-cut type

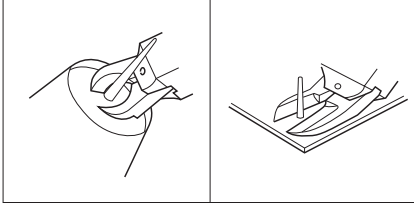
An air-hydro cylinder of air + oil provides low speeds and high power. These nippers are suitable for precision cutting in which gate projecting allowance is strict.

193P

# Applications

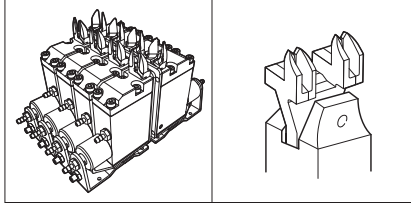
HAND TOOLS

## Cutting direct gate molded components



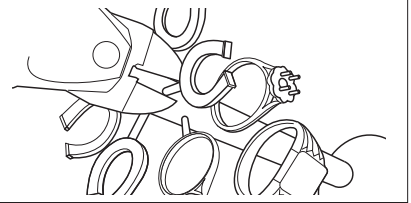
Cuts large diameter sprues such as garment cases, helmets, pipe joint parts, trash cans, planters. Superb durability in long term use.

## Gate cut for multiple impression molded components



Compact, lightweight body and with a large selection of blade items, easy mounting on chuck board and standby jig. Achieves efficient cuts matching cycle time.

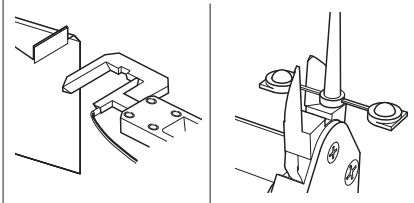
## Taking products from a jewelry tree



Cutting of precious metals for rings, necklaces etc. Superb durability and increased efficiency with powerful nipper blades.

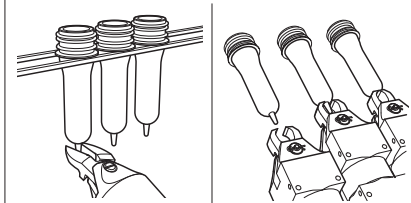
BITS & SOCKETS

## Gate cutting for lenses, LGP, and transparent products



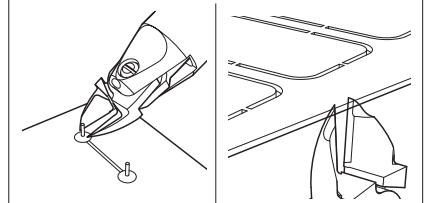
Various heated nippers prevent cracks and whitening, the decisive factor is the heating temperature of the blades and cutting speed. Supports demands for improved flexibility and high precision cutting.

## Pre-form cutting for food and drug cases



Improved efficiency in pre-forming, nippers attached to flat finish pre-form molding machine. Cut precision is linked to product quality.

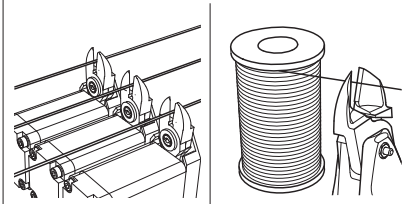
## Cutting electronic components and around boards



Optimal handy nippers for cutting lead lines after soldering to significantly reduce wrist strain. Substrate is attached to the desktop robot...

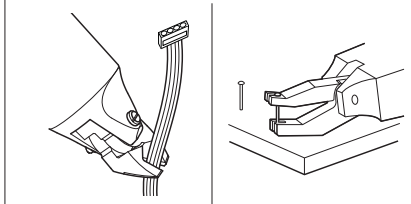
ELECTRIC TOOLS

## Wire cutting with coil winding machine



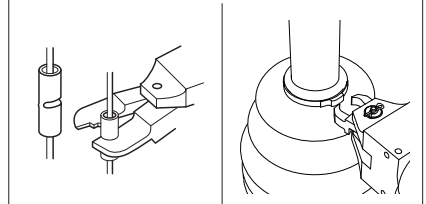
Attach to the nipper unit of automatic coil winding machine for power transformers, fan motors and ignition. Cutting thick diameter wires that cannot be torn off.

## Hand tools for dismantling in recycling plants



Cuts a variety of wires, copper tubing and steel bands in recycling plants such as PCs and OA equipment, pachinko machines, TVs, and refrigerators, washing machines, etc. Nippers for the purpose of pulling out the pachinko machine pins.

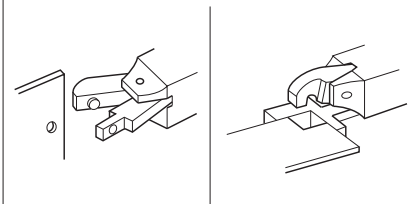
## Crimping task for solderless terminals



For crimping terminals with various wiring harnesses such as for switchboards, electrical products and lighting equipment. Less strain on fingers and wrists. Increased work efficiency for stop rings for auto parts.

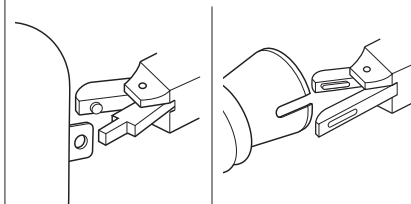
AIR TOOLS

## Die cutter for aluminum products and plastic components



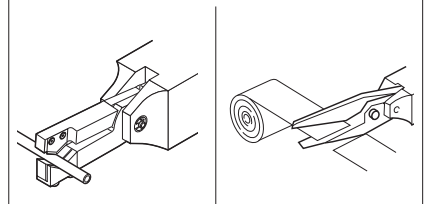
By support for separate blades, allows punching and form cutting of aluminum sash and thin plates.

## Punching of blow molded products, punching slotted holes



Punching blow molded products, punching slotted holes, for containers that cannot be punched and automobile ducts, etc.

## Other applications

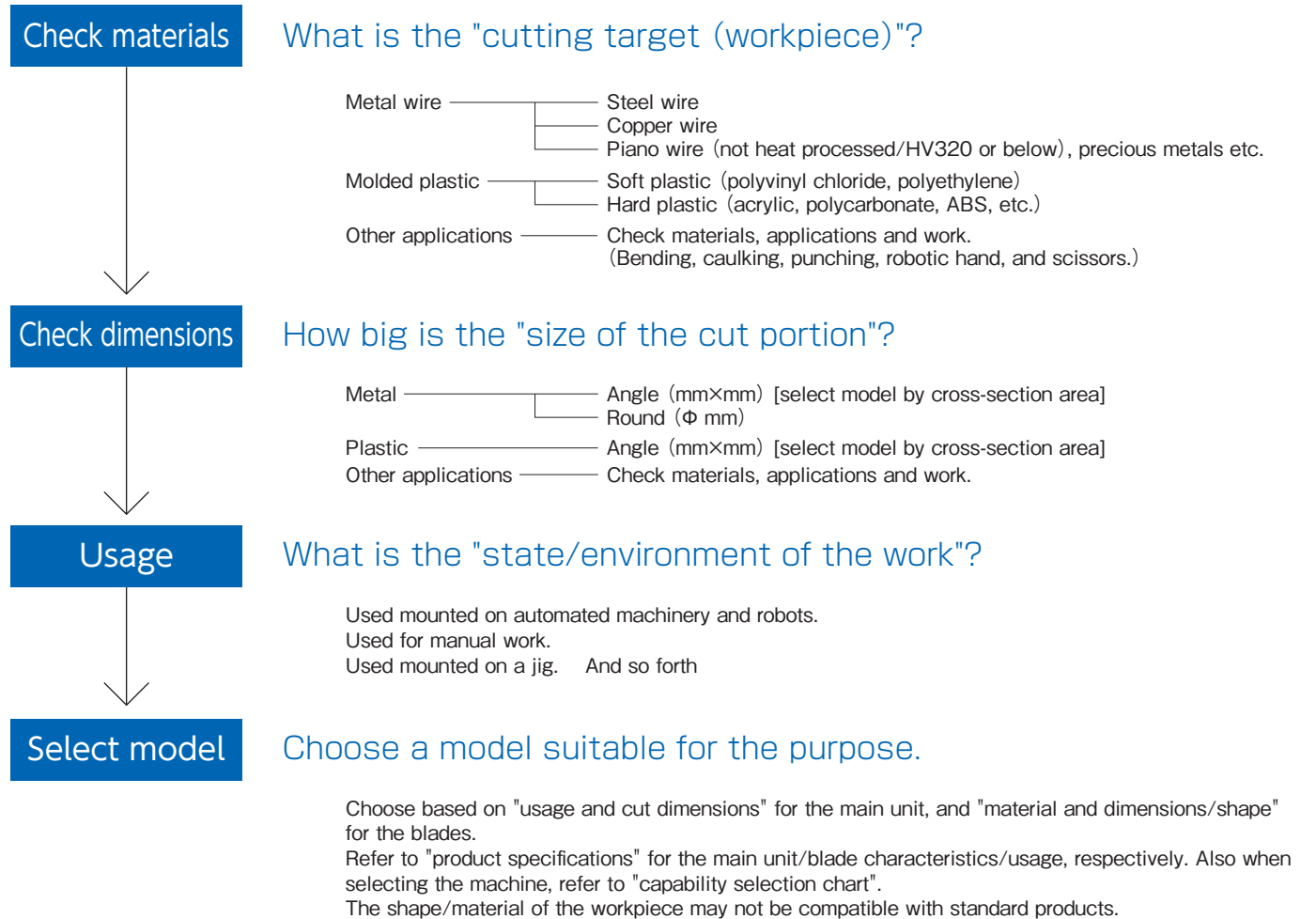


Micro-edge air scissors that can cut various hard-to-cut fibers, carbon, aramid fibers, and soft plastic sheets. Nippers for cutting belt loops of jeans, peeling recycled golf balls, cutting edges with textile machinery, etc.

STATIC SOLUTIONS

GASOLINE ENGINE TOOLS

# Selection method for air nipper



## Guidance for capability selection Note: Reference value when a standard blade is mounted. Values vary depending on the blade shapes and types of cut objects.

Types	Cutting material						Applicable models	Air pressure (MPa)	
	Copper wire	Steel wire (Non-heat treated)	Piano Wire (HV320 or below)	Soft Plastic		Hard Plastic			Solderless terminals
				Dia.	Cross-section				
N · NS · NR	1.0mm	0.5mm	0.2mm	2.0mm	3.1mm <sup>2</sup>			NS2,N3,NS3,NR3	0.4~0.5
	1.0	0.5	0.3	2.0	3.1			N5,NS5,NR5	0.4~0.5
	1.6	1.0	0.5	3.0	7.0	2.0mm		N7,NS7,NR7	0.4~0.5
	1.8	1.2	0.5	4.0	12.5	2.6		N10,NS10L,NR10L	0.5~0.6
	2.3	1.7	0.6	4.5	15.8	4.0		N12	0.5~0.6
	2.6	2.0	1.0	7.0	38.4	5.0		N20,NS20,NR20	0.5~0.6
	3.3	2.8	1.2	10.0	78.5	6.5	1.25/2.0	N30,NS30,NR30	0.5~0.6
	5.5	4.5	2.0	12.0	113.0	6.5		N50,NR50	0.5~0.6
With pressure booster	2.6	1.6		5.0	19.6	4.0	1.25/2.0	P-10L	
	3.0	2.2		8.0	50.2	6.0	2.0/5.5	P-20	
	4.8	4.0		13.0	132.6	7.0	~0.8	P-30	
	6.5	5.5						P-50	
NY				2.0	3.1	1.3		NY03	0.4~0.5
	1.6	1.0		3.0	7.0	2.0		NF05,NY05	0.4~0.5
				3.5	9.6	2.3		NF10,NY10	0.4~0.5
				4.0	12.5	2.6		NF15,NY15	0.4~0.5
				5.0	19.6	3.4		NY25	0.5~0.6
NT				1.5	1.7	1.0		NT03	0.4~0.5
				2.5	4.9	1.5		NT05	0.4~0.5
				3.5	9.6	2.3		NT10	0.4~0.5
				5.0	19.6	3.4		NT20	0.4~0.5
	AS, HS, BJ type		BBB	AP, PF, AJ type			ACD type		

No. GT-NY25

# Sliding Air Nippers



These are high-class air nippers that can be mounted on gate cutting equipment and standby jigs for accurate, speedy cutting of resin products. VESSEL has a wide selection of items to meet a variety of needs not only for around-the-clock operations but also for the highly precise cutting accuracy.



**No. GT-NY25**

## Sliding Air Nippers Horizontal-Type

The horizontal slide enables space to be utilized effectively. The low profile of the nipper body allows objects to be removed from the machine without obstructing the operations of the chuck plate.

HAND TOOLS

BITS & SOCKETS

ELECTRIC TOOLS

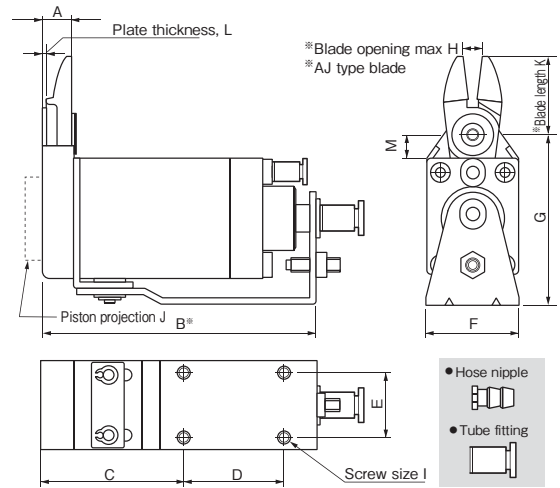
AIR TOOLS

STATIC SOLUTIONS

GASOLINE ENGINE TOOLS

### No. GT-NY05/10/15/25 Sliding Air Nippers Horizontal-Type

- The horizontal slide enables space to be utilized effectively.
- The low profile of the nipper body allows objects to be removed from the machine without obstructing the operations of the chuck plate.



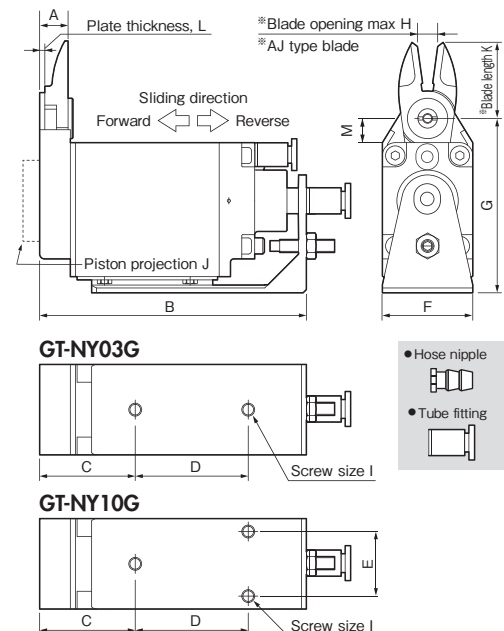
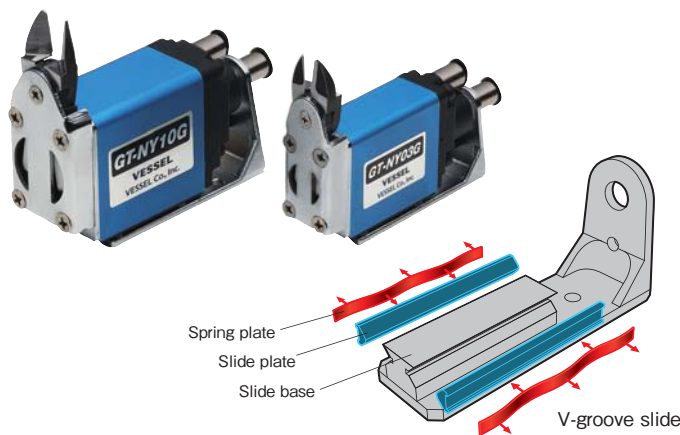
#### Reference

Capacity $\phi$ (mm)				Model No.	Size (mm)													Air Consumption (cm <sup>3</sup> /str.)	Weight (g)	Slide Distance (mm)	Hose Port	EDP No.
Soft Plastic	Hard Plastic	Copper	Steel		A	B	C	D	E	F	G	H	I	J	K	L	M					
3.0	2.0	1.6	1.0	GT-NY05														48	155	Pull 0~3	W/hose nipple	360646
3.0	2.0	1.6	1.0	GT-NY05R	8.6	75.9	40.9	25	15	23	47.6	4	M4	3	22	1.6	8.5	48	155	Push 0~3	Hose I.D. $\phi$ 2.5mm	360647
3.0	2.0	1.6	1.0	GT-NY05-4														48	155	Pull 0~3	W/tube fitting	360648
3.0	2.0	1.6	1.0	GT-NY05R-4														48	155	Push 0~3	Hose I.D. $\phi$ 2.5xO.D. $\phi$ 4mm	360649
3.5	2.3			GT-NY10														68	210	Pull 0~3	W/hose nipple	360652
3.5	2.3			GT-NY10R	8.8	82.1	42.1	30	20	28	51.6	6	M4	5	24	1.6	7.5	68	210	Push 0~3	Hose I.D. $\phi$ 2.5mm	360656
3.5	2.3			GT-NY10-4														68	210	Pull 0~3	W/tube fitting	360660
3.5	2.3			GT-NY10R-4														68	210	Push 0~3	Hose I.D. $\phi$ 2.5xO.D. $\phi$ 4mm	360664
4.0	2.6			GT-NY15														136	319	Pull 0~3	W/hose nipple	360672
4.0	2.6			GT-NY15R	10.2	93	48	35	25	33	58	8	M4	5	27	2	7.5	136	319	Push 0~3	Hose I.D. $\phi$ 2.5mm	360673
4.0	2.6			GT-NY15-4														136	319	Pull 0~3	W/tube fitting	360674
4.0	2.6			GT-NY15R-4														136	319	Push 0~3	Hose I.D. $\phi$ 2.5xO.D. $\phi$ 4mm	360675
5.0	3.4			GT-NY25														184	580	Pull 0~5	W/hose nipple	360680
5.0	3.4			GT-NY25R	12.5	108.5	54.5	40	30	42	69	9	M5	2	31	2.5	10.5	184	580	Push 0~5	Hose I.D. $\phi$ 4mm	360681
5.0	3.4			GT-NY25-6														184	580	Pull 0~5	W/tube fitting	360682
5.0	3.4			GT-NY25R-6														184	580	Push 0~5	Hose I.D. $\phi$ 4xO.D. $\phi$ 6mm	360683

※Capacity indication shows the reference value when a standard blade is mounted. Values vary depending on the blade shapes and type of cut objects.  
 ※K (blade projection) and H (maximum blade opening) indicate the dimensions when a standard blade (AJ type) is mounted. ※Air Pressure: 0.4~0.5MPa (NY25 type: 0.5~0.6)  
 ※B refers to the distance from the cut position for PUSH style models, and the distance from the start position for PULL style models.

### No. GT-NY03G/10G Sliding Air Nippers Horizontal-Type

- V-groove slide base ensures constant, stable positioning.
- The unit is not subject to inclined loads, and has achieved high precision gate cutting performance.



#### Reference


Capacity $\phi$ (mm)				Model No.	Size (mm)													Air Consumption (cm <sup>3</sup> /str.)	Weight (g)	Slide Distance (mm)	Hose Port	EDP No.
Soft Plastic	Hard Plastic				A	B	C	D	E	F	G	H	I	J	K	L	M					
2.0	1.3			GT-NY03G														37	160	Pull 0~3	W/hose nipple	360741
2.0	1.3			GT-NY03GR	8.6	74.5	29.5	30	-	19	46.5	3	M4	0	21	1.6	7.5	37	160	Push 0~3	Hose I.D. $\phi$ 2.5mm	360742
2.0	1.3			GT-NY03G-4														37	160	Pull 0~3	W/tube fitting	360743
2.0	1.3			GT-NY03GR-4														37	160	Push 0~3	Hose I.D. $\phi$ 2.5xO.D. $\phi$ 4mm	360744
3.5	2.3			GT-NY10G														68	275	Pull 0~3	W/hose nipple	360753
3.5	2.3			GT-NY10GR	8.8	82.6	29.6	35	20	28	54	6	M4	5	24	1.6	7.5	68	275	Push 0~3	Hose I.D. $\phi$ 2.5mm	360754
3.5	2.3			GT-NY10G-4														68	275	Pull 0~3	W/tube fitting	360755
3.5	2.3			GT-NY10GR-4														68	275	Push 0~3	Hose I.D. $\phi$ 2.5xO.D. $\phi$ 4mm	360756

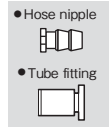
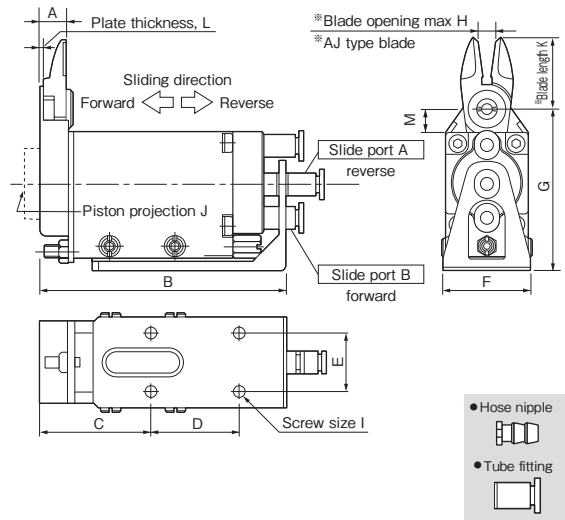
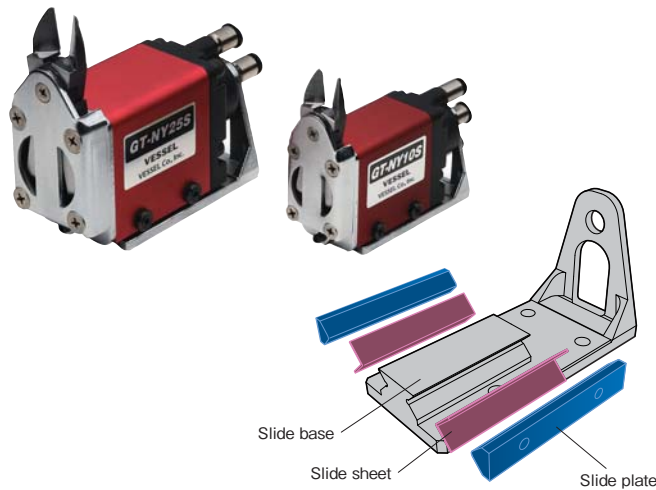
※Capacity indication shows the reference value when a standard blade is mounted. Values vary depending on the blade shapes and type of cut objects. ※K (blade projection) and H (maximum blade opening) indicate the dimensions when a standard blade (AJ type) is mounted. ※Air Pressure: 0.4~0.5MPa

※Blades are optional. Note that a forward or a backward-facing blades are respectively available.



**No. GT-NY10S/25S Double Action Sliding Air Nippers**

- The springless slide construction of the main unit ensures smooth movement. 
- V-groove slide base has been employed for high precision positioning.




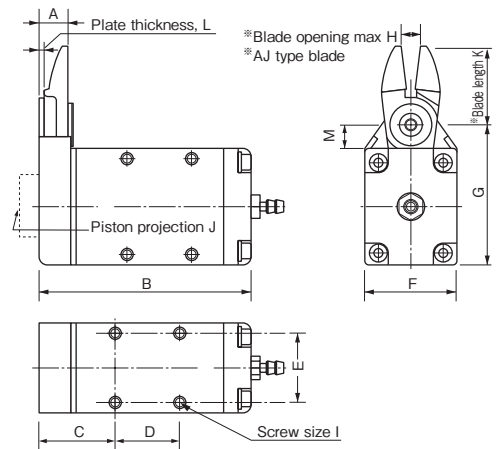
**Reference**

Capacity $\phi$ (mm) Soft Plastic Hard Plastic	Model No.	Size (mm)													Air Consumption (cm <sup>3</sup> /str.)	Weight (g)	Slide Distance (mm)	Hose Port	EDP No.
		A	B	C	D	E	F	G	H	I	J	K	L	M					
3.5 2.3	GT-NY10S	8.8	84.5	38	30	20	32	55	6	M4	5	24	1.6	7.5	68	300	0~3.5	W/tube fitting Hose I.D. $\phi$ 2.5×O.D. $\phi$ 4mm	360731
5.0 3.4	GT-NY25S	12.5	106.5	47	40	30	47	72	9	M5	2	31	2.5	10.5	184	695	0~5.0	W/tube fitting Hose I.D. $\phi$ 4×O.D. $\phi$ 6mm	360732

※Capacity indication shows the reference value when a standard blade is mounted. Values vary depending on the blade shapes and type of cut objects.  
 ※K (blade projection) and H (maximum blade opening) indicate the dimensions when a standard blade (AJ type) is mounted.  
 ※Air Pressure--NY10S: 0.4~0.5MPa / NY25S: 0.5~0.6MPa

**No. GT-NF05/10/15 Type-F Air Nippers**

- These compact, lightweight nippers have been designed for easy mounting inside equipment and to enable secure mounting under high-density mounting conditions. 



**Reference**

Capacity $\phi$ (mm) Soft Plastic Hard Plastic Copper Steel	Model No.	Size (mm)													Air Consumption (cm <sup>3</sup> /str.)	Weight (g)	Hose Port	EDP No.
		A	B	C	D	E	F	G	H	I	J	K	L	M				
3.0 2.0 1.6 1.0	GT-NF05	8.6	59.9	21.9	17	18	23	39.5	4	M3	3	22	1.6	8.4	43	101	W/hose nipple	360606
3.5 2.3 1.7 1.1	GT-NF10	8.8	65.1	23.1	20	22	28	43.5	6	M3.5	5	24	1.6	7.4	63	143	Hose I.D.	360607
4.0 2.6 1.8 1.2	GT-NF15	10.2	73	25	25	26	33	48.5	8	M4	5	27	2	7.4	128	219	$\phi$ 2.5× $\phi$ 4mm	360608

※Capacity indication shows the reference value when a standard blade is mounted. Values vary depending on the blade shapes and type of cut objects.  
 ※K (blade projection) and H (maximum blade opening) indicate the dimensions when a standard blade (AJ type) is mounted. Mounting screw for NF10 (M3.5) is regarded as spare part.  
 ※Air Pressure--0.4~0.5MPa

HAND TOOLS

BITS & SOCKETS

ELECTRIC TOOLS

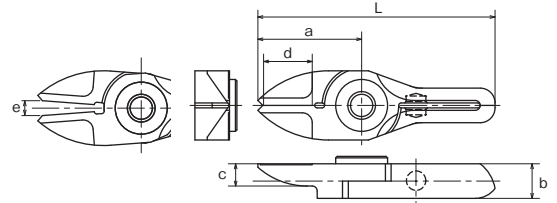
AIR TOOLS

STATIC SOLUTIONS

GASOLINE ENGINE TOOLS

**No. AJ/RAJ/AJB** Straight blades for plastic

**Plastic** **AJ**/This is a set of vertical blades with an unbeveled cutting edge. This can cut a gate of molded objects vertically and straight.  
**RAJ**/This is a reverse bevel of AJ type.  
**AJB**/This has a brazed carbide tip used for cutting hard plastic or plastic containing glass fiber.

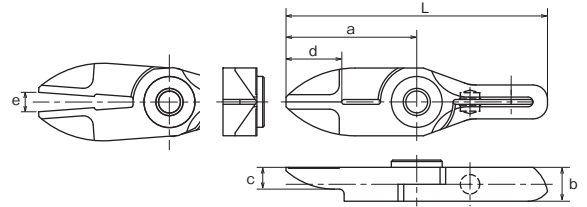


Model No.	Size (mm)						Weight (g)	Material	Applicable models	EDP No.
	a	b	c	d: Effective Length	e: Blade opening	L				
NY03AJ	21	7	4.5	10.5	3	48	17	Special alloy steel	GT-NY03G(-4)	360591
NY03RAJ	21	7	4.5	10.5	3	48	17	Special alloy steel	GT-NY03GR(-4)	360594
NY05AJ	22	7	5	10.5	4	53	22	Special alloy steel	GT-NY05(-4) / NF05	360551
NY05RAJ	22	7	5	10.5	4	53	22	Special alloy steel	GT-NY05R(-4) / NF05	360556
NY05AJB	22	7	5	10.5	4	53	22	w/Carbide chip	GT-NY05(-4) / NF05	360553
NY10AJ	24	7.2	5	12	6	57	28	Special alloy steel	GT-NY10(-4) / NY10G(-4) / NF10 / NY10S	360561
NY10RAJ	24	7.2	5	12	6	57	28	Special alloy steel	GT-NY10R(-4) / NY10GR(-4) / NF10 / NY10S	360566
NY10AJB	24	7.2	5	12	6	57	28	w/Carbide chip	GT-NY10(-4) / NY10G(-4) / NF10 / NY10S	360563
NY15AJ	27	8.2	5.5	13	8	65	41	Special alloy steel	GT-NY15(-4) / NF15	360571
NY15RAJ	27	8.2	5.5	13	8	65	41	Special alloy steel	GT-NY15R(-4) / NF15	360576
NY15AJB	27	8.2	5.5	13	8	65	41	w/Carbide chip	GT-NY15(-4) / NF15	360573
NY25AJ	31	10	6	16	9	77	65	Special alloy steel	GT-NY25(-6) / NY25S	360583
NY25RAJ	31	10	6	16	9	77	65	Special alloy steel	GT-NY25R(-6) / NY25S	360587
NY25AJB	31	10	6	16	9	77	65	w/Carbide chip	GT-NY25(-6) / NY25S	360585

>> For guidance on cutting capability, see P231 of the technical material.

**No. AJL** Straight long blades for plastic

**Plastic** **AJL**/This is a long type set of straight blades. This is useful when there is distance between the nipper and the gate cut portion of the molded object.

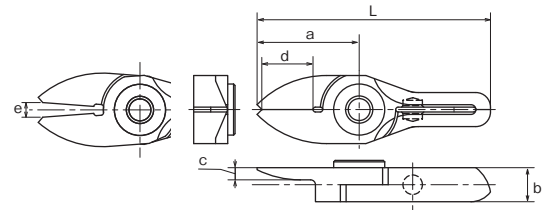


Model No.	Size (mm)						Weight (g)	Material	Applicable models	EDP No.
	a	b	c	d: Effective Length	e: Blade opening	L				
NY03AJL	27	7	4.5	10.5	4	54	21	Special alloy steel	GT-NY03G(-4)	360592
NY05AJL	31	7	5	10.5	5.5	62	29	Special alloy steel	GT-NY05(-4) / NF05	360552
NY10AJL	33	7.2	5	12	8	66	37	Special alloy steel	GT-NY10(-4) / NY10G(-4) / NF10 / NY10S	360562
NY15AJL	38	8.2	5.5	13	11	76	50	Special alloy steel	GT-NY15(-4) / NF15	360572
NY25AJL	46	10	6	16	13	92	88	Special alloy steel	GT-NY25(-6) / NY25S	360584

>> For guidance on cutting capability, see P231 of the technical material.

**No. AJT** Thin, straight blades for plastic

**Plastic** **AJT**/This is a set of straight blades with a thin cutting edge. It can cleanly trim cross sections without remnants.

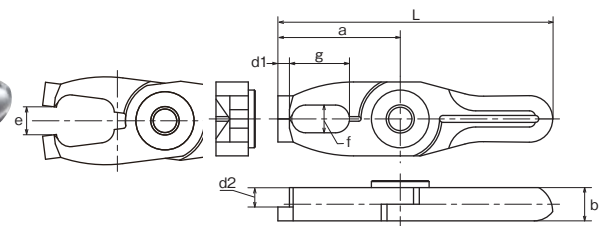


Model No.	Size (mm)						Weight (g)	Material	Applicable models	EDP No.
	a	b	c	d: Effective Length	e: Blade opening	L				
NY03AJT	21	7	2.5	10.5	3	48	17	Special alloy steel	GT-NY03G(-4)	360593
NY05AJT	22	7	3	10.5	4	53	21	Special alloy steel	GT-NY05(-4) / NF05	360554
NY10AJT	24	7.2	3	12	6	57	26	Special alloy steel	GT-NY10(-4) / NY10G(-4) / NF10 / NY10S	360564
NY15AJT	27	8.2	3.5	13	8	65	38	Special alloy steel	GT-NY15(-4) / NF15	360574

>> For guidance on cutting capability, see P231 of the technical material.

**No. AD** Lift blades for plastic

**Plastic** **AD**/This is used for batch processing of the three-dimensional gate such as ride gate.

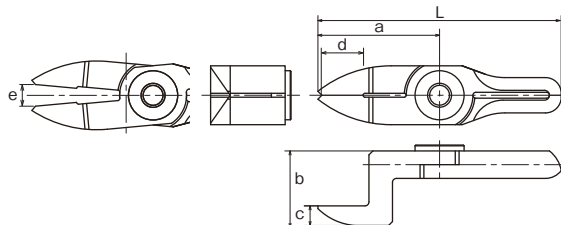


Model No.	Size (mm)			d1 (mm)	d2 (mm)	e: Blade opening (mm)	L (mm)	Weight (g)	Material	Applicable models	EDP No.
	a	b	f×g								
NY10AD	26.5	7.2	6×13	2.5	4.2	6	59.5	31	Special alloy steel	GT-NY10(-4) / NY10G(-4) / NF10 / NY10S	360568
NY15AD	30	8.2	7×14	3	4.7	8	68	45	Special alloy steel	GT-NY15(-4) / NF15	360578
NY25AD	35	10	8×17	4	6	9	81	75	Special alloy steel	GT-NY25(-6) / NY25S	360589

>> For guidance on cutting capability, see P231 of the technical material.

**No. AH/RAH Crank blades for plastic**

**Plastic** **AH**/This is a set of crank shaped blade for plastic. It is effective when there are obstructions or the gate is narrow.  
**RAH**/This is a reverse bevel of AH type used when installing the main units face-to-face.

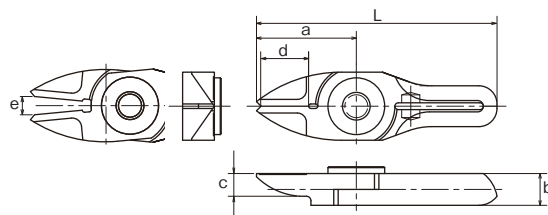


Model No.	Size (mm)							Weight (g)	Material	Applicable models	EDP No.
	a	b	c	d: Effective Length	e: Blade opening	L					
NY05AH	31	19	5	10.5	5.5	62	37	Special alloy steel	GT-NY05(-4) / NF05	360555	
NY05RAH	30	12	5	10.5	5	61	31	Special alloy steel	GT-NY05R(-4) / NF05	360557	
NY10AH	33	20	5	12	8	66	43	Special alloy steel	GT-NY10(-4) / NY10G(-4) / NF10 / NY10S	360565	
NY10RAH	32	12.2	5	12	7	65	36	Special alloy steel	GT-NY10R(-4) / NY10GR(-4) / NF10 / NY10S	360567	
NY15AH	38	21.5	5.5	13	11	76	63	Special alloy steel	GT-NY15(-4) / NF15	360575	
NY15RAH	35	13.2	5.5	13	9	73	52	Special alloy steel	GT-NY15R(-4) / NF15	360577	
NY25AH	46	24	6	17	13	92	110	Special alloy steel	GT-NY25(-6) / NY25S	360586	
NY25RAH	42	16	6	16	12	88	89	Special alloy steel	GT-NY25R(-6) / NY25S	360588	

>> For guidance on cutting capability, see P231 of the technical material.

**No. BJ/RBJ Straight blades for metals**

**Metal** **BJ**/This is a set of vertical blades with an unbeveled cutting edge for metal.  
**RBJ**/This is a reverse bevel of BJ type.

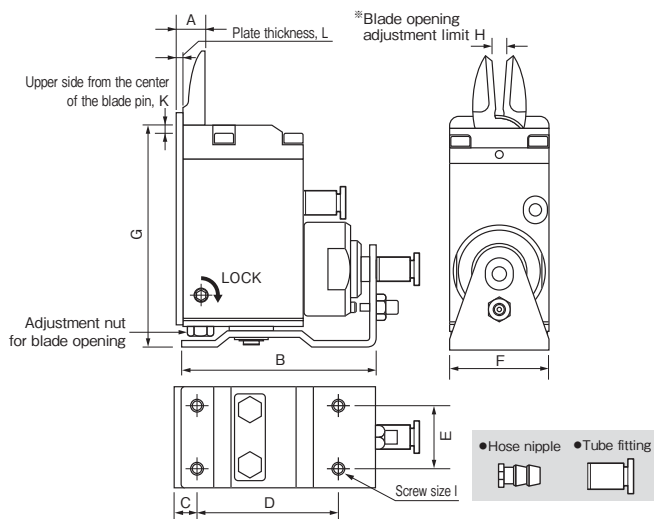


Model No.	Size (mm)							Weight (g)	Material	Applicable models	EDP No.
	a	b	c	d: Effective Length	e: Blade opening	L					
NY05BJ	22	7	5	10.5	4	53	22	Special alloy steel	GT-NY05(-4) / NF05	360558	
NY05RBJ	22	7	5	10.5	4	53	22	Special alloy steel	GT-NY05R(-4) / NF05	360559	

>> For guidance on cutting capability, see P231 of the technical material.

**No. GT-NT03/05/10/20 Sliding Air Nippers Vertical-type**

- Blade opening is adjustable, and fine adjustments are easy to make after mounting the nippers, ensuring clean, unblemished cut surfaces.
- Blade can be installed either with the cutting edge outside or inside.



**Reference**

Capacity $\phi$ (mm) Soft Plastic Hard Plastic	Model No.	Size (mm)											Air Consumption (cm <sup>3</sup> /str.)	Weight (g)	Slide Distance (mm)	Hose Port	EDP No.	
		A	B	C	D	E	F	G	H	I	J	K						
1.5 1.0	GT-NT03													27	178	Pull 0~3	W/hose nipple	360601
1.5 1.0	GT-NT03R													27	178	Push 0~3	Hose I.D $\phi$ 2.5mm	360611
1.5 1.0	GT-NT03-4	9	62	7	43	14	19	68.1	1.5~3	M3	2	5	27	178	Pull 0~3	W/tube fitting	360621	
1.5 1.0	GT-NT03R-4													27	178	Push 0~3	Hose I.D $\phi$ 2.5xO.D. $\phi$ 4mm	360631
2.5 1.5	GT-NT05													47	325	Pull 0~3	W/hose nipple	360602
2.5 1.5	GT-NT05R													47	325	Push 0~3	Hose I.D $\phi$ 2.5mm	360612
2.5 1.5	GT-NT05-4	9	64	7	45	20	32	71.1	3~6	M4	2	5	47	325	Pull 0~3	W/tube fitting	360622	
2.5 1.5	GT-NT05R-4													47	325	Push 0~3	Hose I.D $\phi$ 2.5xO.D. $\phi$ 4mm	360632
3.5 2.3	GT-NT10													82	515	Pull 0~3	W/hose nipple	360603
3.5 2.3	GT-NT10R													82	515	Push 0~3	Hose I.D $\phi$ 2.5mm	360613
3.5 2.3	GT-NT10-6	11	73	8	53	24	38	88.1	4~7	M4	2	5	82	515	Pull 0~3	W/tube fitting	360623	
3.5 2.3	GT-NT10R-6													82	515	Push 0~3	Hose I.D $\phi$ 4xO.D. $\phi$ 6mm	360633
5.0 3.4	GT-NT20													203	930	Pull 0~8	W/hose nipple	360604
5.0 3.4	GT-NT20R													203	930	Push 0~8	Hose I.D $\phi$ 4mm	360614
5.0 3.4	GT-NT20-6	14	103	10	80	28	44	102.1	4.5~9	M5	2	6	203	930	Pull 0~8	W/tube fitting	360624	
5.0 3.4	GT-NT20R-6													203	930	Push 0~8	Hose I.D $\phi$ 4xO.D. $\phi$ 6mm	360634

\*Capacity indication shows the reference value when a standard blade is mounted. Values vary depending on the blade shapes and type of cut objects.  
 \*Blade opening adjustment limit (H) is the dimension adjusted for standard blade (AJ type). \*Air Pressure...0.4~0.5MPa(NT20 type: 0.5~0.6)

\*Blades are optional. Note that a forward or a backward-facing blades are respectively available.

HAND TOOLS

BITS & SOCKETS

ELECTRIC TOOLS

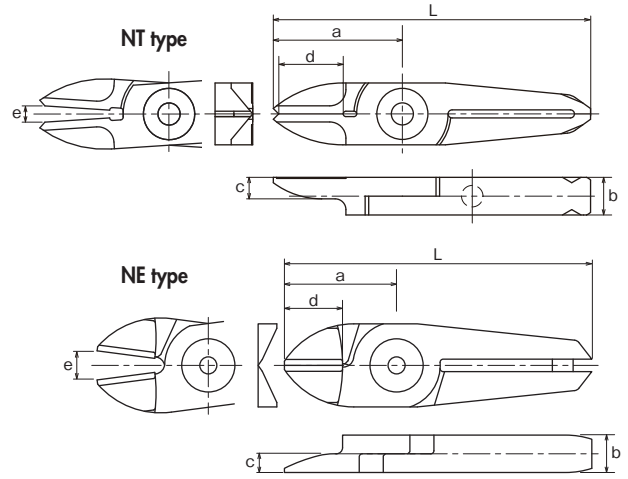
AIR TOOLS

STATIC SOLUTIONS

GASOLINE ENGINE TOOLS

**No. AJ/AJH/AJB** Straight blades for plastic

**Plastic** **AJ**/This is a set of vertical blades with an unbeveled cutting edge. This can cut a gate of molded objects vertically and straight.  
**AJH**/This has a brazed high-speed steel tip suitable for cutting hard plastic.  
**AJB**/This has a brazed carbide tip used for cutting hard plastic or plastic containing glass fiber. Improved durability.

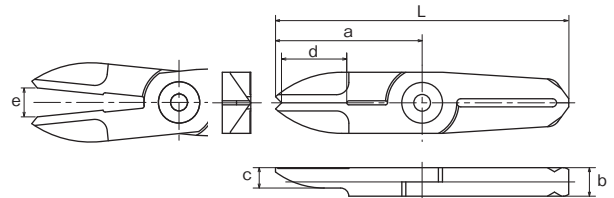


Model No.	Size (mm)						Weight (g)	Material	Applicable models	EDP No.
	a	b	c	d: Effective Length	e: Blade opening	L				
<b>NT03AJ</b>	24	7	4	11	3	59	20	Special alloy steel	GT-NT03 type	360511
<b>NT05AJ</b>	29	7	5	15	6	65	30	Special alloy steel	GT-NT05 type	360512
<b>NT05AJH</b>	29	7	5	15	6	65	30	High Speed Steel		360534
<b>NT05AJB</b>	29	7	5	15	6	65	30	w/Carbide chip		360515
<b>NE5AJ</b>	24	7	3.5	12	6	60	35	Special alloy steel	GT-NT10 type	360184
<b>NT10AJ</b>	35	9	6	17	7	82	62	Special alloy steel		360513
<b>NT10AJH</b>	35	9	6	17	7	82	76	High Speed Steel		360539
<b>NT10AJB</b>	35	9	6	17	7	82	76	w/Carbide chip		360518
<b>NE10AJ</b>	27	9	4.5	12	7	74	70	Special alloy steel		360185
<b>NT20AJ</b>	40	12	6	20	9	97	120	Special alloy steel	GT-NT20 type	360514
<b>NT20AJH</b>	40	12	6	20	9	97	120	High Speed Steel		360544
<b>NT20AJB</b>	40	12	6	20	9	97	120	w/Carbide chip		360543

>> For guidance on cutting capability, see P231 of the technical material.

**No. AJL** Straight long blades for plastic

**Plastic** **AJL**/This is a long type set of straight blades. This is useful when there is distance between the nipper and the gate cut portion of the molded object.

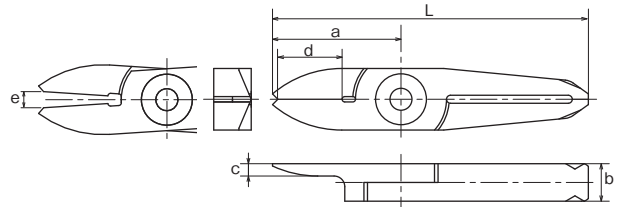


Model No.	Size (mm)						Weight (g)	Material	Applicable models	EDP No.
	a	b	c	d: Effective Length	e: Blade opening	L				
<b>NT05AJL</b>	36	7	5	15	7	72	39	Special alloy steel	GT-NT05 type	360516
<b>NT10AJL</b>	47	9	6	17	9	94	62	Special alloy steel	GT-NT10 type	360520
<b>NT20AJL</b>	57	12	6	20	12	114	156	Special alloy steel	GT-NT20 type	360541

>> For guidance on cutting capability, see P231 of the technical material.

**No. AJT** Thin, straight blades for plastic

**Plastic** **AJT**/This is a set of straight blades with a thin cutting edge. It can cleanly trim cross sections without remnants.

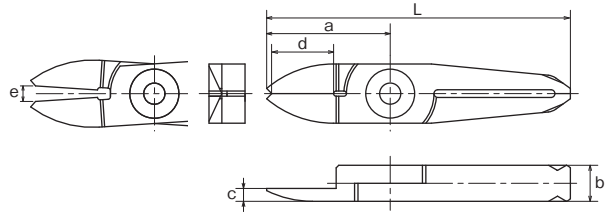


Model No.	Size (mm)						Weight (g)	Material	Applicable models	EDP No.
	a	b	c	d: Effective Length	e: Blade opening	L				
<b>NT03AJT</b>	24	7	2.3	11	3	59	19	Special alloy steel	GT-NT03 type	360526
<b>NT05AJT</b>	29	7	3	15	6	65	29	Special alloy steel	GT-NT05 type	360531
<b>NT10AJT</b>	35	9	4	17	7	82	65	Special alloy steel	GT-NT10 type	360536

>> For guidance on cutting capability, see P231 of the technical material.

**No. AJY** Thin, straight blades for plastic (approaching to a gate)

**Plastic** **AJY**/This is effective when the width between the opposing gates is too short and the blade cannot go in due to its thickness.

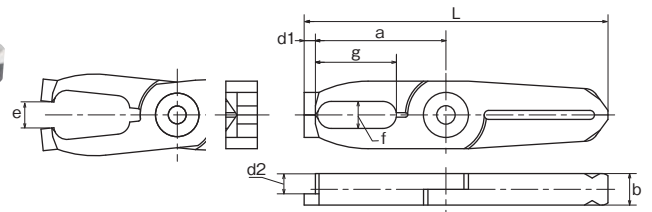


Model No.	Size (mm)							Weight (g)	Material	Applicable models	EDP No.
	a	b	c	d: Effective Length	e: Blade opening	L					
<b>NT03AJY</b>	24	7	2.5	11	3	59	19	Special alloy steel	GT-NT03 type	360527	
<b>NT05AJY</b>	29	7	5	15	6	65	29	Special alloy steel	GT-NT05 type	360532	
<b>NT10AJY</b>	35	9	4	17	7	72	82	Special alloy steel	GT-NT10 type	360537	

>> For guidance on cutting capability, see p231 of the technical material.

**No. AD** Lift blades for plastic

**Plastic** **AD**/This is used for batch processing of the three-dimensional gate such as ride gate.

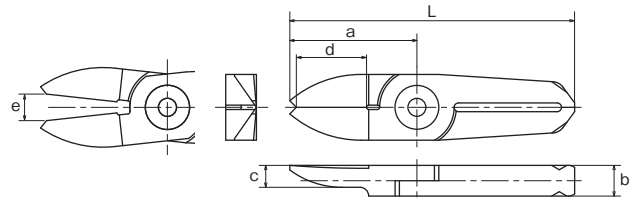


Model No.	Size (mm)			Effective Length (mm)		e: Blade opening (mm)	L (mm)	Weight (g)	Material	Applicable models	EDP No.
	a	b	f×g	d1	d2						
<b>NT05AD</b>	31.5	7	6×18	2.5	4.5	6	67.5	37	Special alloy steel	GT-NT05 type	360533
<b>NT10AD</b>	39	9	8×21.5	4	5	7	86	65	Special alloy steel	GT-NT10 type	360538
<b>NT20AD</b>	46	12	9×24.5	6	7	9	103	141	Special alloy steel	GT-NT20 type	360542

>> For guidance on cutting capability, see p231 of the technical material.

**No. AJV** V shaped straight blades for plastic

**Plastic** **AJV**/This is suitable for gate processing when the cross section is curved or the cut end must not be left.

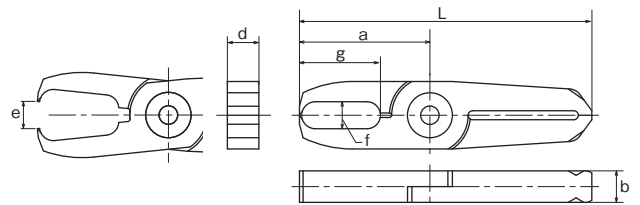


Model No.	Size (mm)							Weight (g)	Material	Applicable models	EDP No.
	a	b	c	d: Effective Length	e: Blade opening	L					
<b>NT05AJV</b>	29	7	5	15	6	65	29	Special alloy steel	GT-NT05 type	360535	
<b>NT10AJV</b>	35	9	6	17	7	82	63	Special alloy steel	GT-NT10 type	360540	

>> For guidance on cutting capability, see p231 of the technical material.

**No. AE** Nipping blades for plastic

**Plastic** **AE**/Used for processing plastic gates such as ride gates and discard gates.



Model No.	Size (mm)							Weight (g)	Material	Applicable models	EDP No.
	a	b	f×g	d: Effective Length	e: Blade opening	L					
<b>NT05AE</b>	29	7	6×18	7	6	65	36	Special alloy steel	GT-NT05 type	360517	
<b>NT10AE</b>	35	9	8×21.5	9	7	82	75	Special alloy steel	GT-NT10 type	360519	

>> For guidance on cutting capability, see p231 of the technical material.

HAND TOOLS

BITS & SOCKETS

ELECTRIC TOOLS

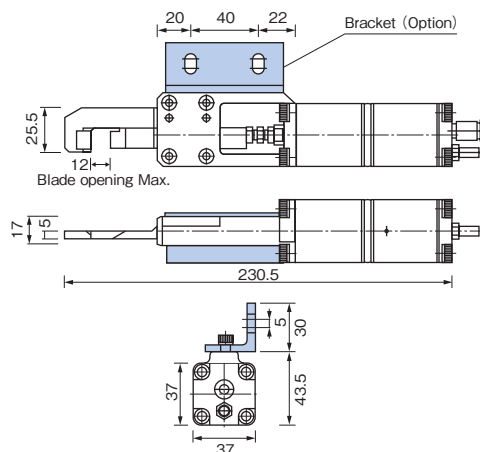
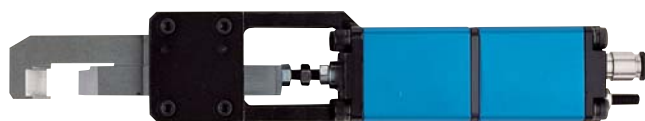
AIR TOOLS

STATIC SOLUTIONS

GASOLINE ENGINE TOOLS

**No. GT-NK10 Thrust-Cut Air Nipper**

- This nipper can cut film-shaped gates in conjunction with a foot switch or high precision travers machine.
- Can cut from the thin end, preventing wrinkles around the cut edge.



**Reference**

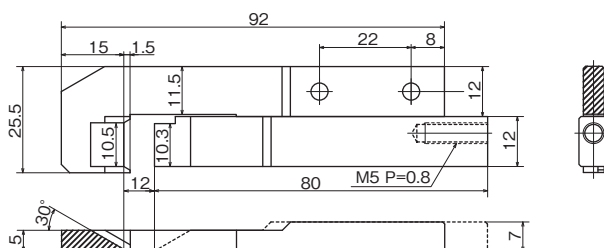
Capacity $\phi$ (mm) ABS Plastic	Model No.	Air Consumption ( $\text{cm}^3/\text{str.}$ )	Air Pressure (MPa)	Weight (g)	Applied Pressure (N)	Spec. & Size of the Hose Port	EDP No.
5	<b>GT-NK10</b>	110	0.4~0.5	800	735	Hose I.D. $\phi 2.5 \times \text{O.D. } \phi 4 \text{mm}$	360641 (w/NK10AJ)

·Hose Coupling: I.D.  $\phi 4 \times \text{O.D. } \phi 6 \text{mm}$  ·Piston stroke···Max.12mm

**No. NK10AJ Thrust-Cut Air Nipper blades**



This is a dedicated set of blades for GT-NK10. Suitable for processing of film gates attached to robot hands.



Model No.	Size (mm)	Shape	Overall Length (mm)	Weight (g)	Material	Applicable models	EDP No.
<b>NK10AJ</b>	See Drawing	For plastic (Knife type)	95	96	Special alloy steel	GT-NK10	—

>> For guidance on cutting capability, see p231 of the technical material.

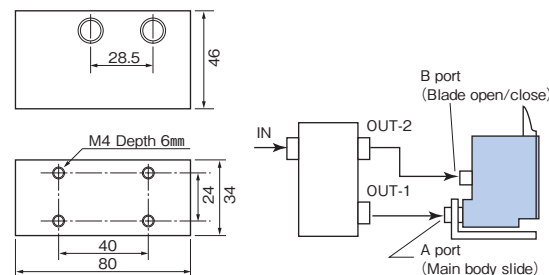
**Related product**

**No. GT-TC-02 Timing Controller**

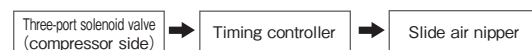
- Enables to adjust the sliding (nippers) and cutting timing, by installing this controller between the compressor and the air nippers. (Approximately 0.5 seconds to 1.5 seconds)



Adjusting Screw  
(0.5~1.5 sec.)



- Working air pressure···0.6MPa
- Size···Height 46 × Length 80 × thickness 34 (mm)
- Weight···275g
- With tube joint: I.D.  $\phi 4 \times \text{O.D. } \phi 6 \text{mm}$



**Connectable nippers (Reference)**

GT-	NY05	NY10	NY15	NY25	NT03	NT05	NT10	NT20	NB20	NB30	NB20LW	NB30LW	EDP No.
Connectable unit numbers	4	3	1	1	6	4	2	1	2	1	2	1	360640

HAND TOOLS

BITS & SOCKETS

ELECTRIC TOOLS

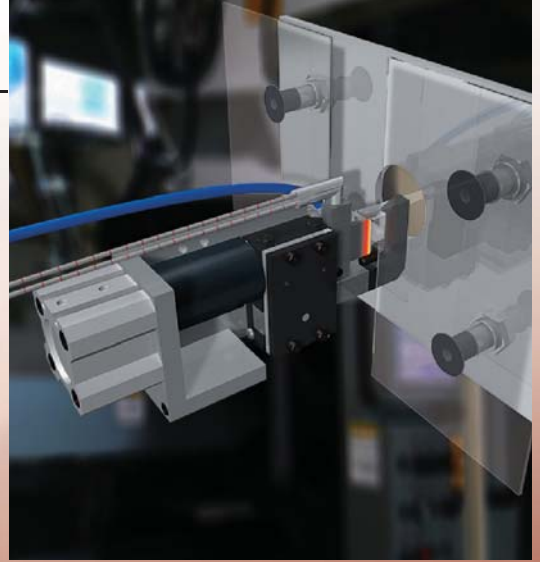
AIR TOOLS

STATIC SOLUTIONS

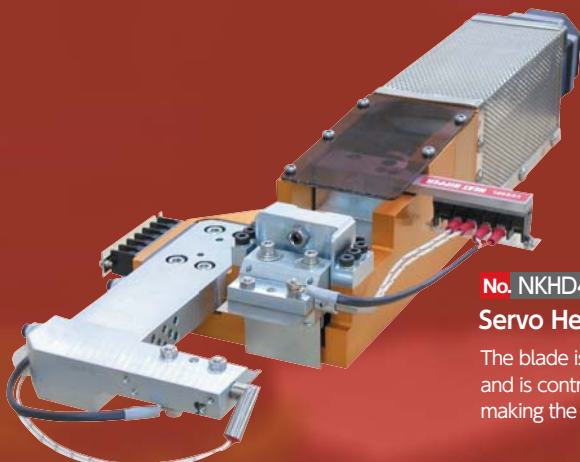
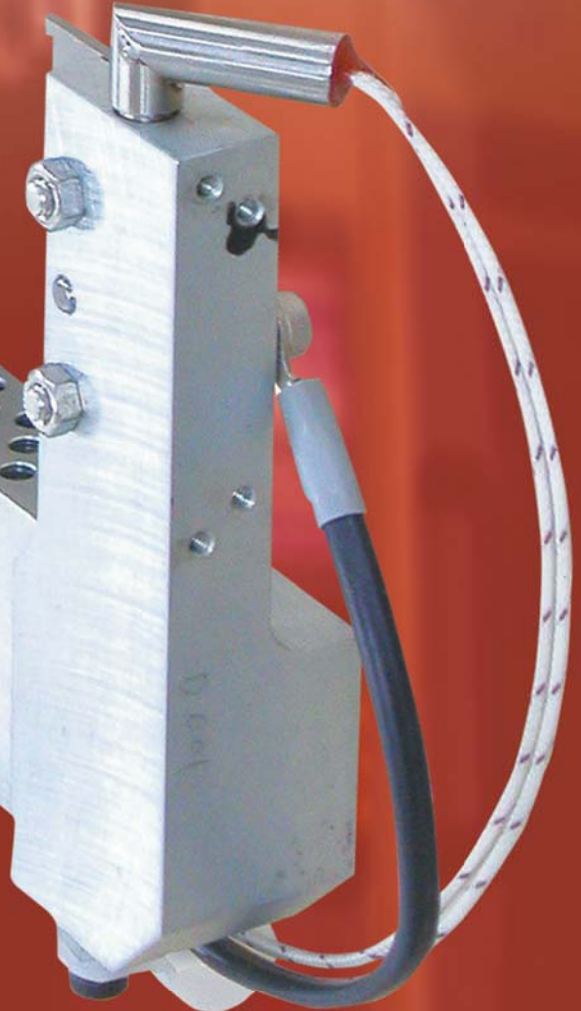
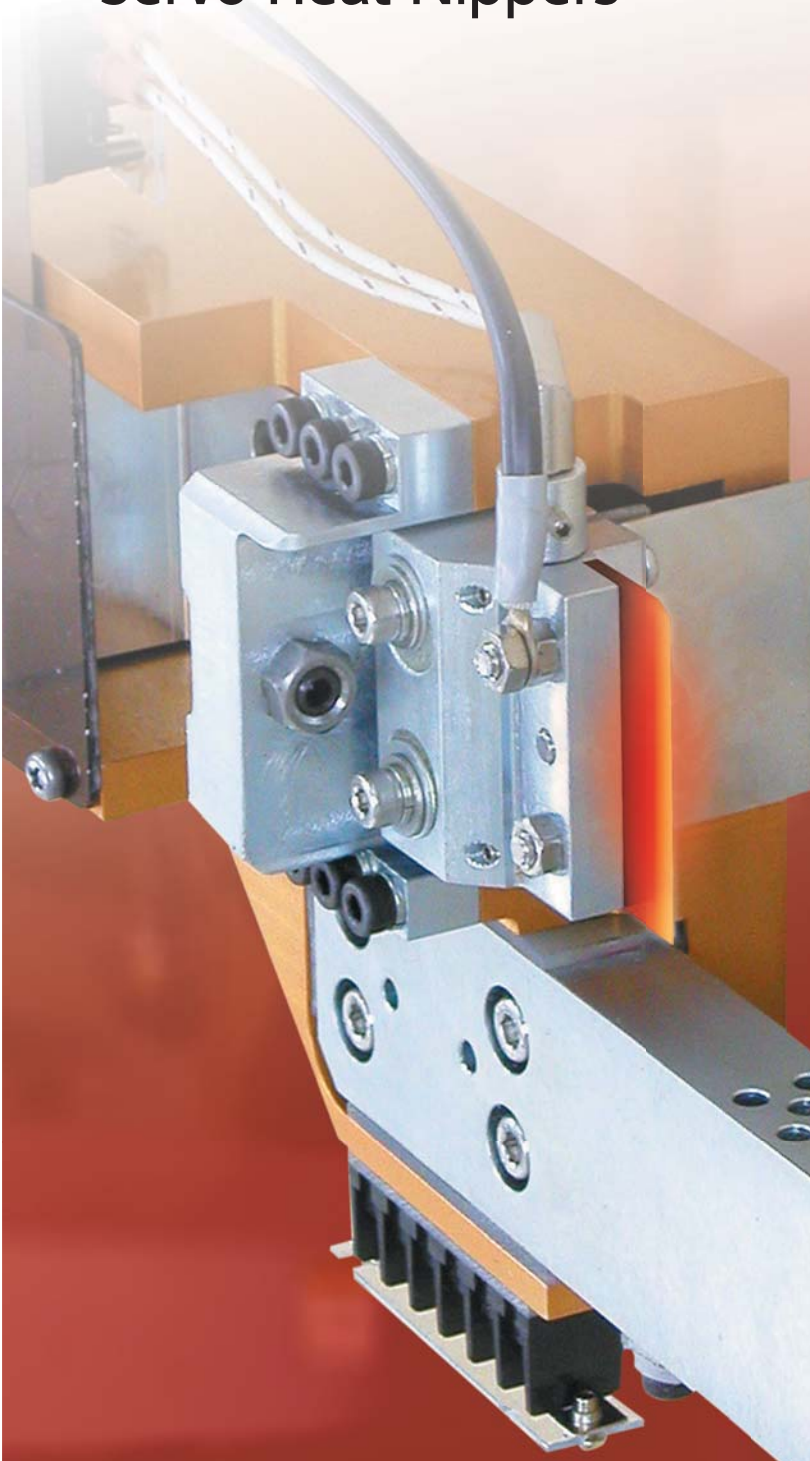
GASOLINE ENGINE TOOLS

No. NKHD45R-50

# Servo Heat Nippers



These air nippers are connected to a heater to suppress cracks and whitening of clear materials such as acrylic. The gate is slowly melted as it's cut, resulting in a clean, unblemished cut surface.



No. NKHD45R-50

## Servo Heat Nippers (With Motor Cylinder)

The blade is fed to the gate position speedily and is controlled to cut very slowly, making the cut surface clean and unblemished.

HAND TOOLS

BITS & SOCKETS

ELECTRIC TOOLS

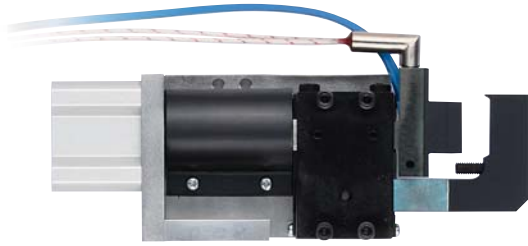
AIR TOOLS

STATIC SOLUTIONS

GASOLINE ENGINE TOOLS

## No. NKH20A/20AR Air-hydro nippers (thrust cut type)

- Air-hydro cylinders produce high power from air and oil.
- Ideal for high precision cutting of products such as optical resin lenses.



- Requires separately sold Hydro Controller.
- Custom-made blade lengths and cylinder capacities available.

Model No.	Cutting Capacity width × thickness (mm) Acril	Blade Edge Temp. (MAX °C)	Cutting Cycle (sec./cut)	Air Consumption (cni/str.)	Piston Stroke (mm)	Weight (g)	EDP No.
NKH20A-25 /20AR-25	10×1.5	180	4~5	60	10	720	—

•Included heater •Included temperature sensor •Air Pressure: 0.6MPa  
 •Working air hose inner diameter: 4mm ※200V/240V heaters are also available as made-to-order.

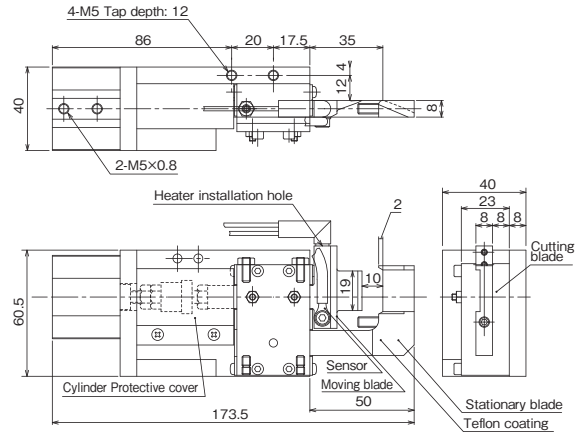
### Blades Specifications

Material	Blade Shape	Blade Opening (mm)	Cutting blade effective (mm)	Weight (g)
Special alloy steel	Knife type (resin)	10	19	125

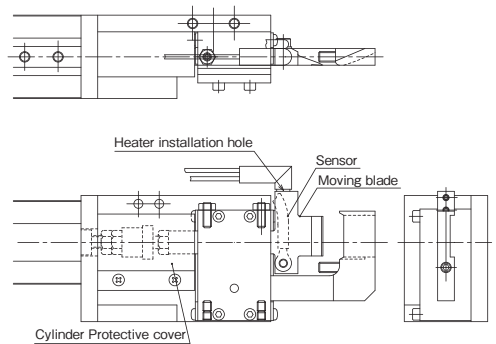
#### Option Parts

- Hydro-converter (Recommended: KOGANEI AHC 32×50)
- Working fluid: Petroleum hydraulic fluid or turbine oil with antifoaming agent additive (VG22~100)
- Temperature controller (DTC-001)

### NKH20A-25 (Forward-facing blades)

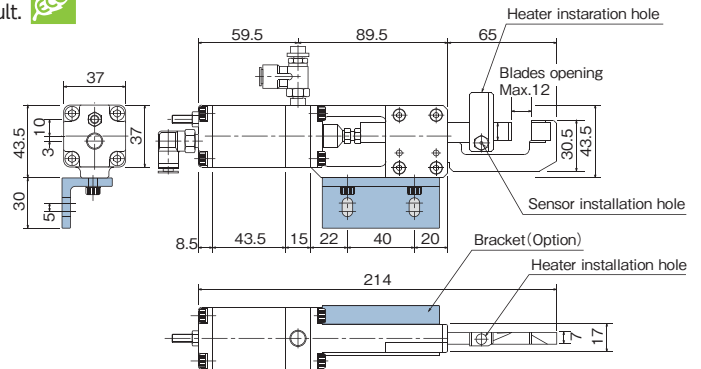
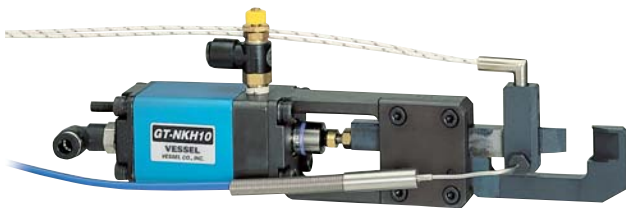


### NKH20AR-25 (Backward-facing blades)



## No. GT-NKH10 Heat Air Nippers

- Speed control of cutting speed and heater temperature allows for various cutting surface solutions and meets demands for high precision cutting result.



Model No.	Cutting Capacity width × thickness (mm) Acril	Blade Edge Temp. (MAX °C)	Cutting Cycle (sec./cut)	Air Consumption (cni/str.)	Piston Stroke (mm)	Weight (g)	EDP No.
GT-NKH10	7×1.5	200	4~5	73	12	715	360643 (w/NKH10AJ) 360644 (w/NKH10RAJ)

•Included heater  
 •Included temperature sensor  
 •Air Pressure: 0.5~0.6MPa

### Blades Specifications

Model No.	Material	Blade Shape	Blade Opening (mm)	Cutting blade effective (mm)	Weight (g)	EDP No.
NKH10AJ NKH10RAJ	Special alloy steel	Knife type (resin)	12	10	137	— —

#### Option Parts

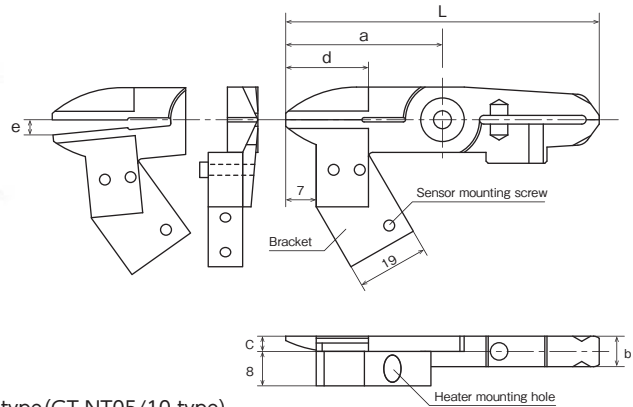
- Temperature controller (DTC-001)



## No. NTH05AJ/10AJ Heat air nipper Blade

- Plastic ● One blade is fixed in position, facilitating easy gate alignment. In addition, a slide function presses the product into position.

Example of blade mounting



- Use these blades in combination with the Sliding Air Nippers vertical type (GT-NT05/10 type).
- For the main unit dimensions, see the Sliding Air Nippers vertical type on P186.

Model No.	Size (mm)						Weight (g)	Cutting Capacity $\phi$ (mm) Acrylic	Set temperature (MAX. °C)	Material	Applicable models	EDP No.
	a	b	c	d: Effective Length	e: Blade opening	L						
<b>NTH05AJ</b>	36	7	3.5	15	3.5	72	40	2.5	200	Special alloy steel	GT-NT05(-4)/GT-NT05R(-4)	360546
<b>NTH10AJ</b>	47	9	4.7	17	4.5	94	88	3.5	200	Special alloy steel	GT-NT10(-6)/GT-NT10R(-6)	360547

The above information on weight does not include heater or sensor.

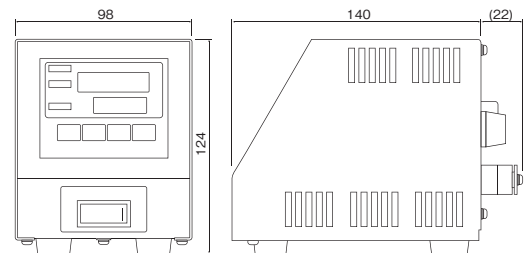
The following parts are not provided; purchase them separately.

- Special heater (80 W/120 V, cord length: 300 mm), temperature sensor (type-K thermocouple, cord length: 1,000 mm), speed controller, and bracket (for heater mounting)

Option Parts  • Temperature controller (DTC-001)

## No. DTC-001 Benchtop Temperature Controller

- The heating element can be connected directly to the main unit, a useful feature that saves labor during wiring installation.
- Compact construction enables the unit to be easily carried, allowing for changing the work site at any time.



Please inform us of the model No. of the heat nipper when placing an order.

Model No.	Temperature range Thermocouple K (°C)	Power supply (V)	Power consumption (with 100 VAC input)	Operating ambient temperature/humidity (°C) / (%)	Protection fuse	Weight (g)	EDP No.
<b>DTC-001</b>	0~200	AC100~240	Approx. 3W (Approx. 5VA) (With no load)	0~40 RH35~85% (No condensing)	One 15A fuse is incorporated.	900	—

※ Please ensure the input voltage in prior to operation as it is directly connected to the heater.  
 ※ Two types of heaters are available for 100V and 240V.

Option Parts  • Power supply cable : Model No. DTC-001-

- : Cable for connection to the terminal block is necessary to be included.
- : (N/A) Cable not necessary.
- A : 2m power cable w/Japanese type plug (A-type)
- C : 2m power cable w/European type plug (C-type)
- : (N/A) Cable not necessary.

HAND TOOLS

BITS & SOCKETS

ELECTRIC TOOLS

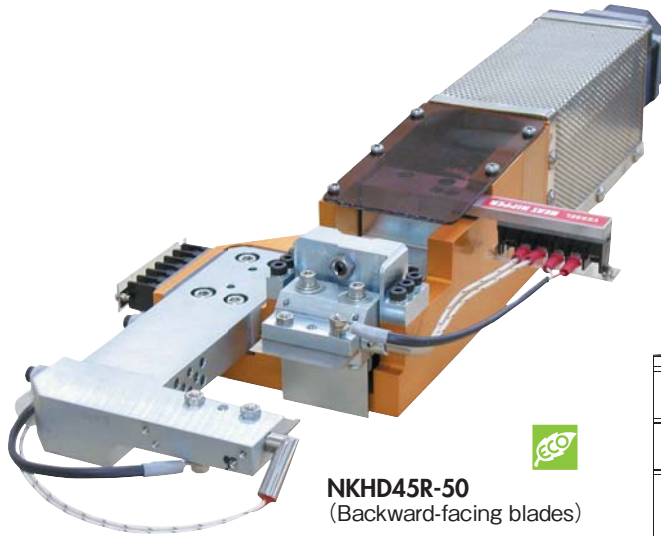
AIR TOOLS

STATIC SOLUTIONS

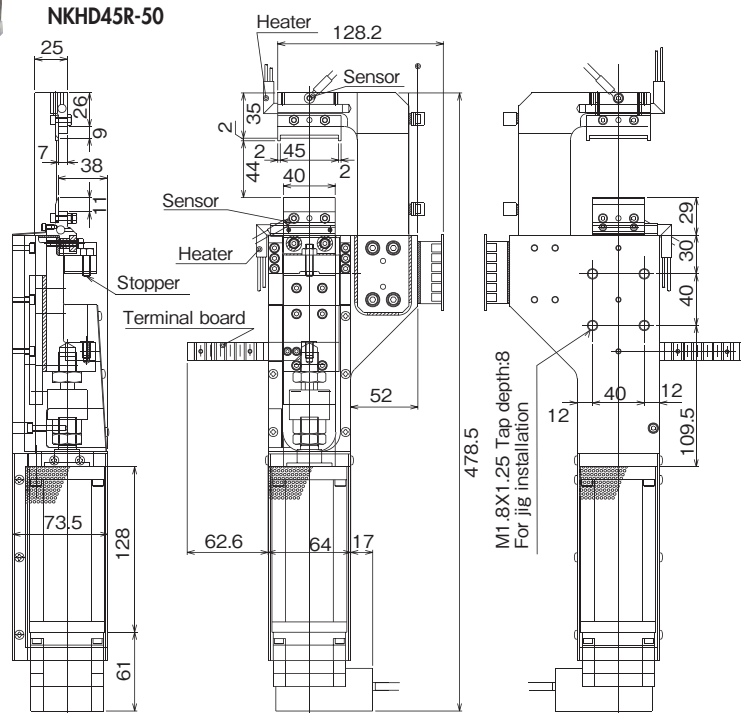
GASOLINE ENGINE TOOLS

## No. NKHD20A(R)/45R Servo Heat Nippers (With Motor Cylinder)

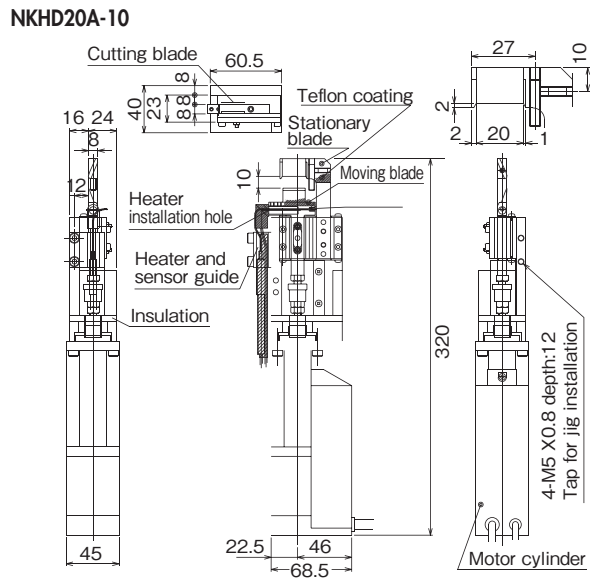
- Blade travel distance and speed can be easily programmed.
- Servo motor control enables delicate blade feeding and quiet gate cutting performance.



**NKHD45R-50**  
(Backward-facing blades)  
← See P192



Compact type  
**NKHD20A-10**  
(Forward-facing blades)  
**NKHD20AR-10**  
(Backward-facing blades)



Model No.	Cutting Capacity width x thickness φ (mm) Acril	Blade Edge Temp. (MAX °C)	Cutting Cycle (sec./cut)	Blade Opening (mm)	Position Accuracy	Max. Thrust (N)	Max. Speed (mm/s)	Positioning Points (pts)	Power Supply Voltage	Current Consumption Power Control circuit	Weight (kg)	EDP No.
<b>NKHD45R-50</b>	24×1.2	180	10	43	±0.1mm or less	500	100	16	DC24V±10%	3.0A 0.2A	5	—
<b>NKHD20A(R)-10</b>	10×1.5	180	10	10	±0.1mm or less	100	400	16	DC24V±10%	2.0A	1.6	—

**Option Parts**

•Temp. controller (DTC-001) •Power supply •Heater code •Parallel cable •ADP cable •Controller (CTC-33) •Power cord •Sensor cord  
For the options noted above, contact us because required items or the numbers of them may change depending on the installation method, use details, etc. of servo heat nippers.

HAND TOOLS

BITS & SOCKETS

ELECTRIC TOOLS

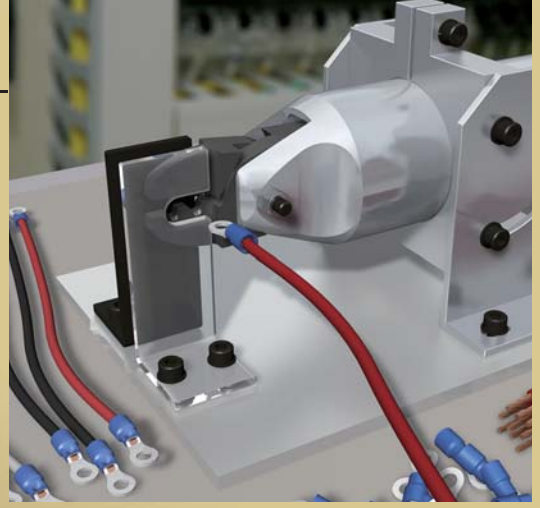
AIR TOOLS

STATIC SOLUTIONS

GASOLINE ENGINE TOOLS

No. GT-NR20

# Air Nippers For Cutting and Crimping



Various models are available;  
Square type for automation cutting equipment;  
Round type, together with a dedicated stand,  
for resin or direct gate-cutting.;  
Lever type for manual operation...



No. GT-NR20

## Air Nipper Round-Type without Lever

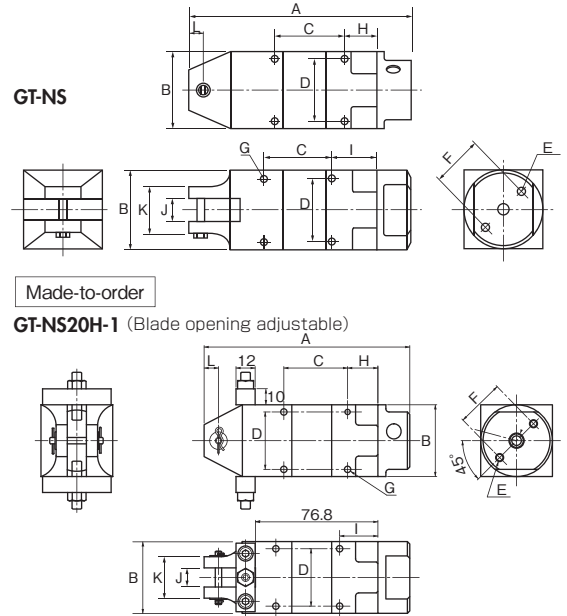
A tough body for hard jobs. The parts machined at high precision enable smooth cutting jobs to be accomplished.  
With convenient scales facilitating the installation position adjustment.

## No. GT-NS3/5/7/10L/20/30 Square Air Nippers

●VESSEL provides a generous selection of blades for gate-cutting of resin molded products and various wire cutting in a welding automatic machine and wire winding machine.



- The position of air intake port is 180-degree rotatable.
- Two air intake ports are provided, so they can be switched depending on the mounting place.



Made-to-order

GT-NS20H-1 (Blade opening adjustable)

### Reference

Capacity $\phi$ (mm)				Model No.	Size (mm)												Air Consumption (cm <sup>3</sup> /str.)	Air Pressure (MPa)	Weight (g)	Hose coupling	EDP No.
Soft Plastic	Hard Plastic	Copper	Steel		A	B	C	D	E	F	G	H	I	J	K	L					
2.0	1.0	0.5		GT-NS3	110	23	40	19	M3 Depth8	17	M3 Depth3.5	19	24	7	23	7	45	0.4~0.5	95	Rc 1/8	360012
2.0	1.0	0.5		GT-NS5	94	30	30	24	M4 Depth10	20	M3 Depth5	14	19	7	23	7	64	0.4~0.5	135		360013
3.0	2.0	1.6	1.0	GT-NS7	113	36	30	28	M4 Depth10	24	M4 Depth5.5	18	23	9	23	7	116	0.4~0.5	215		360014
4.0	2.6	1.8	1.2	GT-NS10L	113	36	30	28	M4 Depth10	24	M4 Depth5.5	18	23	12	26	7	116	0.5~0.6	215		360009
7.0	5.0	2.6	2.0	GT-NS20	129	45	40	36	M5 Depth12	30	M4 Depth7	19	24	12	26	9	230	0.5~0.6	370		360010
10.0	6.5	3.3	2.8	GT-NS30	170	56	60	46	M6 Depth12	40	M5 Depth10	20	30	17	36	15	584	0.5~0.6	685		360011
7.0	5.0	2.6	2.0	GT-NS20H-1	129	45	40	36	M5 Depth12	30	M4 Depth7	19	24	12	26	9	230	0.5~0.6	455	—	

※The capacity in the above table is given for reference, when mounting a standard type of blade. The capacity depends on the blade shape and the material of the object to cut.  
 •Air hose inner dia. : 5mm •Overall length and Weight: Accessories not included.

• Check the dimensions of the VESSEL nippers and blades when installing them in an automation machine (outer diameter of the frame, screw diameter, distance between installation screws, and others)  
 • The GT-NS50 is available as made-to-order. Please consult us for more detail.

## No. GT-N3/5/7/10/12/20/30/50 Hand Held Air Nippers

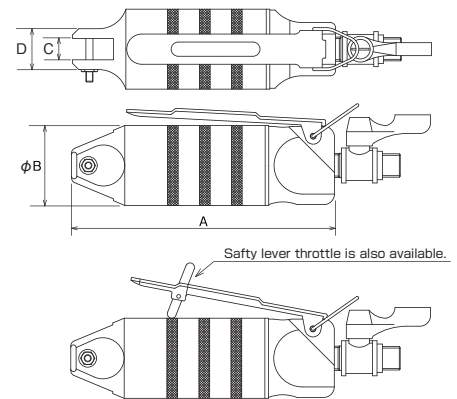
●VESSEL's made-to-order blades provide solutions for a virtually unlimited range of needs, leading to safer and more efficient working conditions, and less fatigue for the operator.



※Except N20, N30, and N50



•N20, N30 and N50 have the air cock.



Safety lever throttle is also available.

### Reference

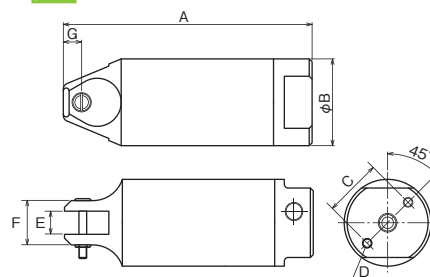
Capacity $\phi$ (mm)				Model No.	Size (mm)				Air Consumption (cm <sup>3</sup> /str.)	Air Pressure (MPa)	Weight (g)	Body	Hose coupling	EDP No.
Soft Plastic	Hard Plastic	Copper	Steel		A	B	C	D						
2.0	1.0	0.5		GT-N3	112	23	7	14	45	0.4~0.5	95	Rc 1/8	Rc 1/4	360002
2.0	1.0	0.5		GT-N5	103	30	7	17	64	0.4~0.5	135	Rc 1/8		360003
3.0	2.0	1.6	1.0	GT-N7	123	34	9	17	116	0.4~0.5	180	Rc 1/4		360004
4.0	2.6	1.8	1.2	GT-N10	132	34	9	17	116	0.4~0.5	185	Rc 1/4		360005
4.5	4.0	2.3	1.7	GT-N12	142	36	12	20	116	0.5~0.6	210	Rc 1/4		360006
7.0	5.0	2.6	2.0	GT-N20	148	45	12	23	230	0.5~0.6	375	Rc 1/4		360007
10.0	6.5	3.3	2.8	GT-N30	185	56	17	30	584	0.5~0.6	625	Rc 1/4	360008	
		5.5	4.5	GT-N50	237	75	25.2	43	1,170	0.5~0.6	1,220	Rc 1/4	360001	

※The capacity in the above table is given for reference, when mounting a standard type of blade. The capacity depends on the blade shape and the material of the object to cut.  
 •Hose coupling: R 1/4 •Air hose inner dia. : 5mm •Overall length: Accessories, Hunger not included. •Weight: Accessories not included.

※Blades are optional.

## No. GT-NR3/5/7/10L/20/30/50 Air Nipper Round-Type without Lever

- The position of air intake port is 180-degree rotatable.
- Two air intake ports are provided, so they can be switched depending on the mounting place.



### Reference

Capacity $\phi$ (mm)				Model No.	Size (mm)							Air Consumption (cm <sup>3</sup> /str.)	Air Pressure (MPa)	Weight (g)	Hose coupling	EDP No.
Soft Plastic	Hard Plastic	Copper	Steel		A	B	C	D	E	F	G					
2.0	1.0	0.5		<b>GT-NR3</b>	110	23	17	M3 Depth8	7	14	7	45	0.4~0.5	70	Rc 1/8	360015
2.0	1.0	0.5		<b>GT-NR5</b>	94	30	20	M4 Depth10	7	17	7	64	0.4~0.5	110		360016
3.0	2.0	1.6	1.0	<b>GT-NR7</b>	113	34	22	M4 Depth10	9	17	7	116	0.4~0.5	150		360017
4.0	2.6	1.8	1.2	<b>GT-NR10L</b>	113	36	24	M4 Depth10	12	20	7	116	0.5~0.6	215		360018
7.0	5.0	2.6	2.0	<b>GT-NR20</b>	129	45	30	M5 Depth12	12	23	9.5	230	0.5~0.6	280		360019
10.0	6.5	3.3	2.8	<b>GT-NR30</b>	165	56	40	M6 Depth12	17	30	10.5	584	0.5~0.6	505	Rc 1/4	360020
12.0	6.5	5.5	4.5	<b>GT-NR50</b>	222	75	50	M8 Depth12	25.2	43	15	1,170	0.5~0.6	1,190	Rc 1/4	360024

※The capacity in the above table is given for reference, when mounting a standard type of blade. The capacity depends on the blade shape and the material of the object to cut.  
 ・Air hose inner dia.: 5mm ・Overall length and Weight: Accessories not included.

※Before mounting on dedicated/automatic machines, check the following product dimensions. (Flame O.D., screw dia., (screw to screw) dimensions, etc.)

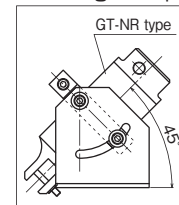
※Capacity ( $\phi$ ) is for reference purpose only. It varies depending on products.

## No. NR10LST/20ST/30ST/50ST Stand for GT-NR

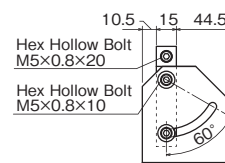
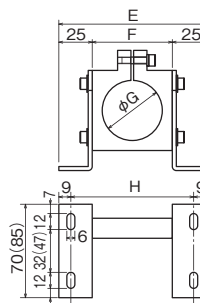
- Fixing hardware for sprue cutting of direct gates or mounting to an automatic machine.
- Mounted angle can be adjusted (0 to 60°).



### Mounting example



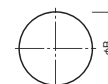
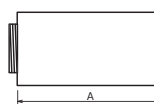
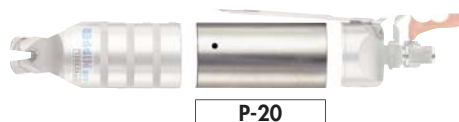
Model No.	Size (mm)				Weight (g)	EDP No.
	E	F	G	H		
<b>NR10LST</b>	102	52	36	84	335	360057
<b>NR20ST</b>	110	60	45	92	385	360058
<b>NR30ST</b>	130	80	56	112	535	360059
<b>NR50ST [Option]</b>	150	100	75	132	835	—



Figures in ( ) are for the NR50ST

## No. P-10L/20/30/50 Extra Pressure Boosters

- This unit is to be used in case the originally required pressure is not obtainable by the limit of space and air pressure.



### Reference

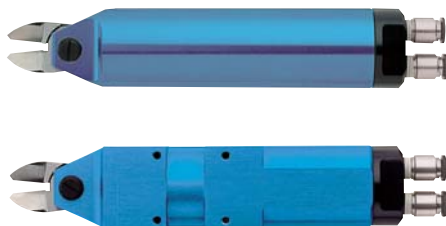
Capacity $\phi$ (mm)				Applicable models	Model No.	Size (mm)		Air Consumption (cm <sup>3</sup> /str.)	Air Pressure (MPa)	Weight (g)	EDP No.
Soft Plastic	Hard Plastic	Copper	Steel			A	B				
5.0	4.0	2.6	1.6	NS10L, NR10L, N12	<b>P-10L</b>	71	36	223	Up to 0.5MPa	115	360051
8.0	6.0	3.0	2.2	N20, NS20, NR20	<b>P-20</b>	87	45	508	Up to 0.5MPa	215	360052
13.0	7.0	4.8	4.0	N30, NS30, NR30	<b>P-30</b>	92	56	956	Up to 0.5MPa	330	360053
	6.5	5.5		N50, NR50	<b>P-50</b>	133	75	2,670	Up to 0.5MPa	840	360054

※The capacity in the above table is given for reference, when mounting a standard type of blade. The capacity depends on the blade shape and the material of the object to cut.  
 ・Above figures of overall length and the weight are defined for the extra booster specs only. And these figures in the installation.

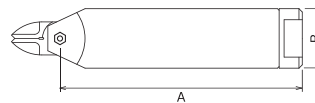
※Blades are optional.

## No. GT-NWR10/20/30 GT-NWS1/10/20 Double Action Air Nippers

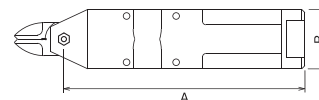
- Blade opening and closing is driven by air piston.
- Having no spring mechanism in the main unit facilitates maintenance.



GT-NWR



GT-NWS



Model No.	Capacity $\phi$ (mm)			Air Consumption (ml/str.)	Applied Pressure (N)	Air Pressure (MPa)	Size (mm)		Weight (g)	EDP No.
	Copper	Steel	ABS Plastic				A	B		
<b>Double Action Air Scissors (Round Type without Lever)</b>										
GT-NWR10	1.8	1.2	4.0	116	588	0.4~0.5	146	$\phi 36$	280	360710
GT-NWR20	2.6	2.0	6.5	230	1,372	0.5~0.6	165	$\phi 45$	523	360711
GT-NWR30	3.3	2.8	9.5	584	2,744	0.5~0.6	216	$\phi 56$	980	360712
<b>Double Action Air Scissors (Square Type)</b>										
GT-NWS1	1.0	0.5	2.0	45	294	0.4~0.5	95	23×20	116	360702
GT-NWS10	1.8	1.2	4.0	116	588	0.4~0.5	146	36×36	356	360706
GT-NWS20	2.6	2.0	6.5	230	1,372	0.5~0.6	165	45×45	610	360707

## No. GT-NB20/30/20LW/30LW

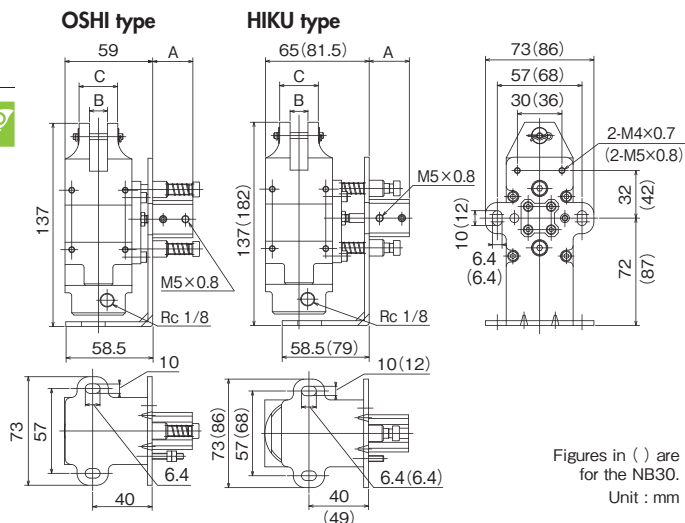
### Sliding Air Nippers Bracket-Type

- VESSEL has achieved smooth and continuous slide movement even for large diameter gate cuts, which produces a large shock at each cut.



GT-NB20LW-10TM  
Slide Mechanism Accurate Model

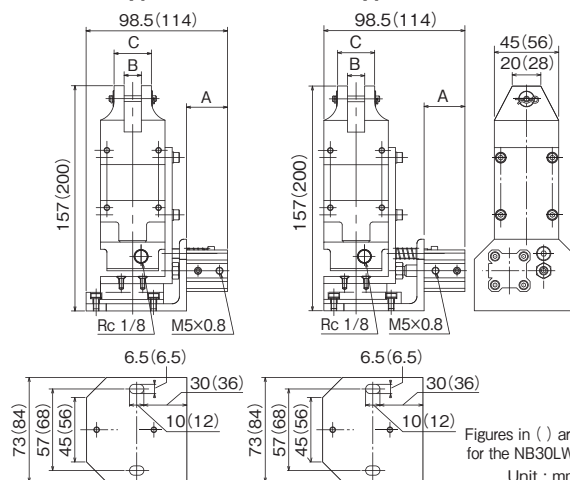
GT-NB20



Figures in ( ) are for the NB30.  
Unit : mm

SM type

TM type



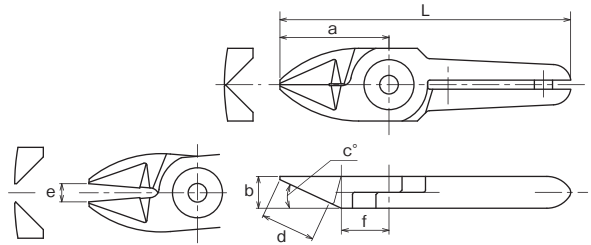
Figures in ( ) are for the NB30LW.  
Unit : mm

Model No.	Dimensions (mm)			Slide Direction/Distance (mm)	Weight (g)	EDP No.
	A	B	C			
GT-NB20(5-OSHI)	22	12	26	Push 0~5	755	360073
GT-NB20(5-HIKU)	22	12	26	Pull 0~5	755	360071
GT-NB20(10-OSHI)	27	12	26	Push 0~10	755	360074
GT-NB20(10-HIKU)	27	12	26	Pull 0~10	755	360072
GT-NB30(10-HIKU)	28.5	17	36	Pull 0~10	1,420	360076
GT-NB20LW-10TM	28.5	12	26	Pull 0~10	795	360069
GT-NB30LW-10TM	29.5	17	36	Pull 0~10	1,315	360077
GT-NB20LW-10SM	28.5	12	26	Push 0~10	795	360068
GT-NB30LW-10SM	29.5	17	36	Push 0~10	1,325	360078

**No. AS/HS Standard**



**AS/Standard type.** Basic set of blades used for cutting copper wire and steel wire.  
**HS/Improved durability with brazed high-speed steel.**



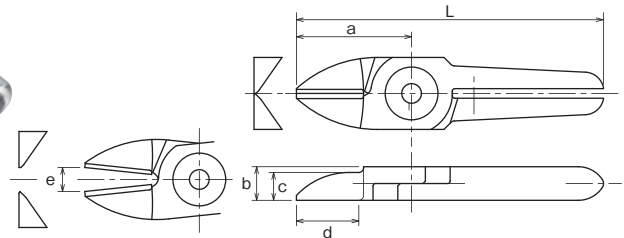
Model No.	Size (mm)							Weight (g)	Material	Applicable models	EDP No.
	a	b	c(*)	d: Effective Length	e: Blade opening	f	L				
N3AS	24	7	25	12	4	10.5	64	35	Special alloy steel	GT-NS3 / N3 / NR3	360102
N3HS	24	7	25	12	4	10.5	64	35	w/High speed steel chip	GT-NS3 / N3 / NR3	360101
N5AS	24	7	25	12	4	10.5	64	40	Special alloy steel	GT-NS5 / N5 / NR5	360112
N5HS	24	7	25	12	4	10.5	64	40	w/High speed steel chip	GT-NS5 / N5 / NR5	360111
N7AS	27	9	30	13.5	4	12.5	81	80	Special alloy steel	GT-NS7 / N7 / NR7	360122
N7HS	27	9	30	13.5	4	12.5	81	80	w/High speed steel chip	GT-NS7 / N7 / NR7	360121
N10AS	27	9	30	13.5	5	12.5	91	85	Special alloy steel	GT-N10	360132
N10HS	27	9	30	13.5	5	12.5	91	85	w/High speed steel chip	GT-N10	360131
N10LAS	35	12	30	20	5	15	89	120	Special alloy steel	GT-NS10L / NR10L	360181
N12AS	35	12	30	20	5	15	105	135	Special alloy steel	GT-N12	360142
N12HS	35	12	30	20	5	15	105	135	w/High speed steel chip	GT-N12	360141
N20AS	35	12	30	20	9	15	95	140	Special alloy steel	GT-NS20 / N20 / NR20 / NB20	360151
N30AS	43	17	30	25	9	18	127	370	Special alloy steel	GT-NS30 / N30 / NR30 / NB30	360161

>> For guidance on cutting capability, see P231 of the technical material.

**No. BJ Straight blades for metals**



**BJ/This is a set of vertical blades with an unbeveled cutting edge for metal.**



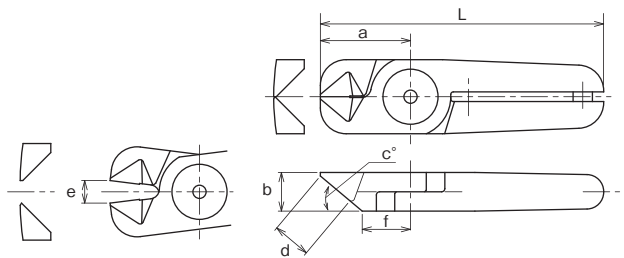
Model No.	Size (mm)							Weight (g)	Material	Applicable models	EDP No.
	a	b	c	d: Effective Length	e: Blade opening	L					
NW1BJ	20	5	3	10.5	3.5	50	16	16	Special alloy steel	GT-NWR1 / NWS1	360450
N3BJ	24	7	5.8	13	5	64	35	35	Special alloy steel	GT-NS3 / N3 / NR3	360106
N5BJ	24	7	5.8	13	4	64	40	40	Special alloy steel	GT-NS5 / N5 / NR5	360119
N7BJ	27	9	7.5	13	5	81	75	75	Special alloy steel	GT-NS7 / N7 / NR7	360128
NW10BJ	30	9	6	14	5	85	76	76	Special alloy steel	GT-NWR10 / NWS10	360453
NW20BJ	40	12	6	21.5	8	100	142	142	Special alloy steel	GT-NWR20 / NWS20	360459
NW30BJ	55	17	8	29.5	11	140	367	367	Special alloy steel	GT-NWR30	360460

>> For guidance on cutting capability, see P231 of the technical material.

**No. AG Powerful cutting blades**



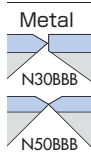
**AG/This is a set of blades with increased strength with a shorter cutting edge than the standard type. More welding pressure is created because it cuts at the base of the blades.**



Model No.	Size (mm)							Weight (g)	Material	Applicable models	EDP No.
	a	b	c(*)	d: Effective Length	e: Blade opening	f	L				
N20AG	28	12	40	12	7	15	88	135	Special alloy steel	GT-NS20 / N20 / NR20 / NB20	360159
N20HS	26	12	40	10	7	13.5	86	135	w/High speed steel chip	GT-NS20 / N20 / NR20 / NB20	360157

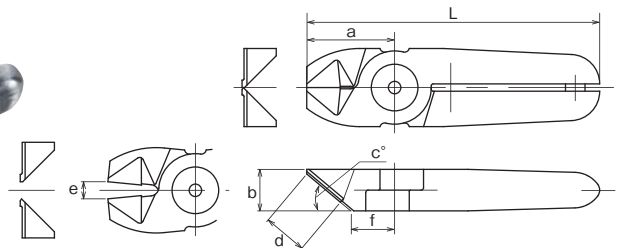
>> For guidance on cutting capability, see P231 of the technical material.

**No. BBB Powerful cutting blades with carbide tips**



**BBB/With carbide tips suitable for cutting hard wires such as high steel wire and piano wire.**

Carbide tips  
 Recommended to the applications where more durable blade than the special alloy steel is required (i.e. when cutting piano wires)



Model No.	Size (mm)							Weight (g)	Material	Applicable models	EDP No.
	a	b	c(*)	d: Effective Length	e: Blade opening	f	L				
N30BBB	36	17	40	18	7	18	120	365	w/Carbide chip	GT-NS30 / N30 / NR30 / NB30	360172
N50BBB	46	25	35	19	9	24	166	955	w/Carbide chip	GT-N50 / NR50	360177

>> For guidance on cutting capability, see P231 of the technical material.

HAND TOOLS

BITS & SOCKETS

ELECTRIC TOOLS

AIR TOOLS

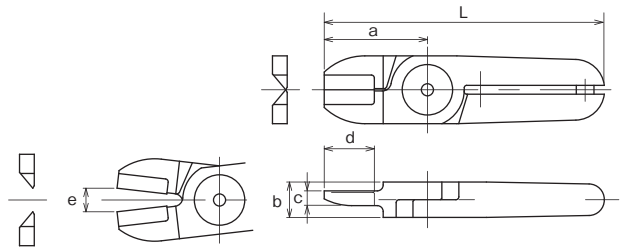
STATIC SOLUTIONS

GASOLINE ENGINE TOOLS

### Air nipper standard blades for metal

#### No. BFB/AS Clipper blades with carbide tips

**Metal** BFB/With carbide tips, suitable for cutting metal wire and thin pipe.  
**AS**/Standard clipper type blades.

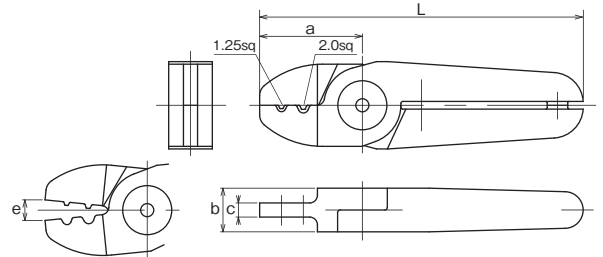


Model No.	Size (mm)						Weight (g)	Material	Applicable models	EDP No.
	a	b	c	d: Effective Length	e: Blade opening	L				
<b>N20BFB</b>	35	12	5	17	8	95	150	w/Carbide chip	GT-NS20 / N20 / NR20 / NB20	360156
<b>N50AS</b>	60	25	10	30	11	180	950	Special alloy steel	GT-N50 / NR50	360175

>> For guidance on cutting capability, see P231 of the technical material.

#### No. ACD Crimp edge for solderless terminals

**Metal** ACD/This is a set of blades for crimping solderless terminals.  
 (Bare terminal 1.25sq/2.0sq)



Model No.	Size (mm)					Weight (g)	Material	Applicable models	EDP No.
	a	b	c	e: Blade opening	L				
<b>N30ACD</b>	40	17	5.5	8	126	335	Special alloy steel	GT-NS30 / N30 / NR30 / NB30	360171

>> For guidance on cutting capability, see P231 of the technical material.

### Air nipper standard blades for plastic

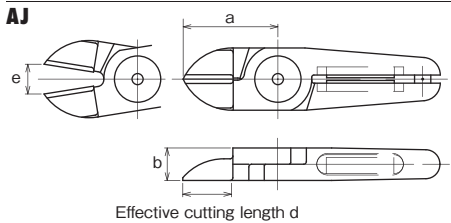
#### No. NM NM Blades

**PAT.**

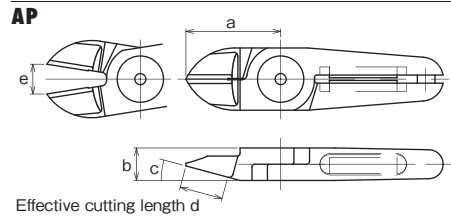


- Ideal for around-the-clock operations
- Semi-permanent magnetic force
- Compatible with our standard nipper bodies

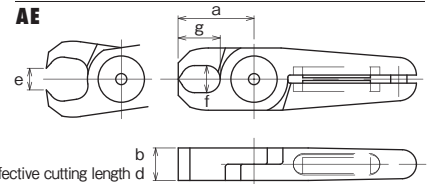
Thin, straight type / For plastic parts



For plastic parts



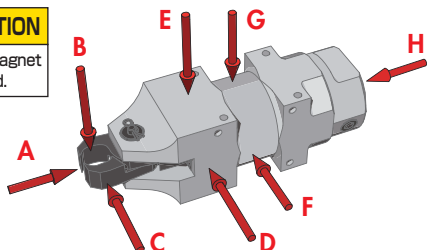
Nipping type / For plastic parts



Model No.	Size (mm)							Weight (g)	Applicable models	EDP No.
	a	b	c (*)	d	e	f x g				
<b>NM20AJ</b>	35	12	-	18	11	-	116	GT-NS20 / N20 / NR20 / NB20	360246	
<b>NM20AP</b>	35	12	15	16	11	-	124	GT-NS20 / N20 / NR20 / NB20	360247	
<b>NM20AE</b>	28	12	-	12	8	10x15.5	129	GT-NS20 / N20 / NR20 / NB20	360248	
<b>NM30AJ</b>	52	17	-	28	11	-	360	GT-NS30 / N30 / NR30 / NB30	360261	
<b>NM30AP</b>	66	17	15	38	16	-	380	GT-NS30 / N30 / NR30 / NB30	360262	
<b>NM30AE</b>	45	17	-	17	12	13x28	358	GT-NS30 / N30 / NR30 / NB30	360263	

>> For guidance on cutting capability, see P231 of the technical material.

※Customization also available upon request.



#### Result of magnetic force measurement

If a magnetic sensor for operation check is installed nearby, please confirm the magnetic force level in the following diagram.

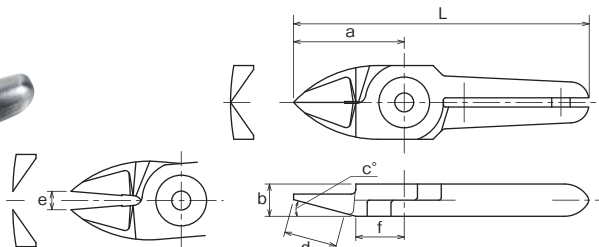
品番No.	A	B	C	D	E	F	G	H	EDP No.
<b>NM20AE</b>	85	10	10	5	32	5	2	0	360248
<b>NM30AE</b>	34	8	8	6	42	15	30	3	360263

Measurement unit: Gauss  
 Measurement device: Gaussmeter GM-1200 manufactured by DENSHIJIKI INDUSTRY Co., Ltd.



**No. AP Standard blades for plastic**

Plastic **AP**/Standard set of blades used to cut plastic. A large R is provided in the cross section for gate cutting in which the cut end must not be left. (The cutting edge is curved.)

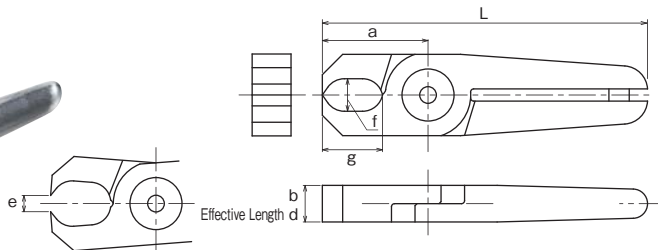


Model No.	Size (mm)							Weight (g)	Material	Applicable models	EDP No.
	a	b	c(*)	d: Effective Length	e: Blade opening	f	L				
<b>N3AP</b>	24	7	15	11.5	4	10.5	64	35	Special alloy steel	GT-NS3 / N3 / NR3	360104
<b>N5AP</b>	24	7	15	11.5	4	10.5	64	40	Special alloy steel	GT-NS5 / N5 / NR5	360114
<b>N7AP</b>	27	9	30	11.5	4	14.5	81	80	Special alloy steel	GT-NS7 / N7 / NR7	360124
<b>N10AP</b>	27	9	30	11.5	5	14.5	91	85	Special alloy steel	GT-N10	360134
<b>N10LAP</b>	35	12	15	16	5	15	89	120	Special alloy steel	GT-NS10L / NR10L	360182
<b>N12AP</b>	35	12	15	16	5	15	105	135	Special alloy steel	GT-N12	360144
<b>N20AP</b>	35	12	15	16	11	15	95	125	Special alloy steel	GT-NS20 / N20 / NR20 / NB20	360155
<b>N30AP</b>	66	17	15	38	16	24	150	380	Special alloy steel	GT-NS30 / N30 / NR30 / NB30	360165

>> For guidance on cutting capability, see P231 of the technical material.

**No. AE Nipping blades for plastic**

Plastic **AE**/Used for plastic gates such as ride gates and discard gates.

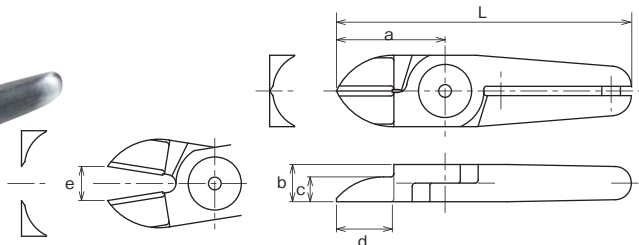


Model No.	Size (mm)							Weight (g)	Material	Applicable models	EDP No.
	a	b	f×g	d: Effective Length	e: Blade opening	L					
<b>N3AE</b>	20	7	6x11	7	3.5	60	35	Special alloy steel	GT-NS3 / N3 / NR3	360108	
<b>N5AE</b>	20	7	6x6.6	7	3.5	60	40	Special alloy steel	GT-NS5 / N5 / NR5	360118	
<b>N7AE</b>	26	9	8x14.8	9	4	80	85	Special alloy steel	GT-NS7 / N7 / NR7	360126	
<b>N20AE</b>	28	12	10x15.5	12	8	88	135	Special alloy steel	GT-NS20 / N20 / NR20 / NB20	360158	
<b>N30AE</b>	45	17	13x28	17	12	129	395	Special alloy steel	GT-NS30 / N30 / NR30 / NB30	360166	

>> For guidance on cutting capability, see P231 of the technical material.

**No. AJ Straight blades for plastic**

Plastic **AJ**/Vertical blades with an unbeveled cutting edge for plastic. You can apply it at a right angle to the gate.

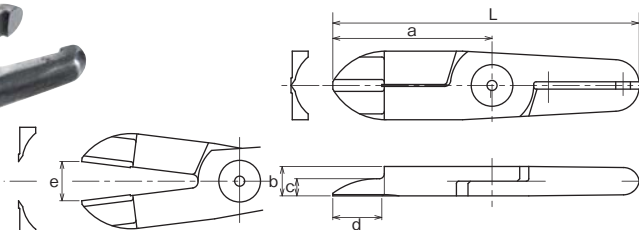


Model No.	Size (mm)							Weight (g)	Material	Applicable models	EDP No.
	a	b	c	d: Effective Length	e: Blade opening	L					
<b>NW10AJ</b>	30	9	6	14	5	85	76	Special alloy steel	GT-NWR10 / NWS10	360454	
<b>N20AJ</b>	35	12	8	18	11	95	125	Special alloy steel	GT-NS20 / N20 / NR20 / NB20	360152	
<b>N20AJB</b>	35	12	8	18	11	95	125	w/Carbide chip	GT-NS20 / N20 / NR20 / NB20	360381	
<b>NW20AJ</b>	40	12	6	21.5	8	100	142	Special alloy steel	GT-NWR20 / NWS20	360457	
<b>N30AJ</b>	52	17	8	28	11	136	370	Special alloy steel	GT-NS30 / N30 / NR30 / NB30	360169	
<b>NW30AJ</b>	55	17	8	29.5	11	140	368	Special alloy steel	GT-NWR30	360461	

>> For guidance on cutting capability, see P231 of the technical material.

**No. AJL/Quasi-standard products Straight long blades for plastic**

Plastic **AJL**/Long type straight blades. Suitable when there is distance between the nippers and the gate cut portion of the workpiece. N30AJL163 is useful for cutting wide gates.



Model No.	Size (mm)							Weight (g)	Material	Applicable models	EDP No.
	a	b	c	d: Effective Length	e: Blade opening	L					
<b>※N10LAJ141</b>	61	12	7	34	10	115	165	Special alloy steel	GT-NS10L / NR10L	360369	
<b>N20AJL</b>	65	12	7	20	16	125	230	Special alloy steel	GT-NS20 / N20 / NR20 / NB20	360150	
<b>※N20AB39</b>	61	12	7	36	14	121	185	Special alloy steel	GT-NS20 / N20 / NR20 / NB20	360376	
<b>※N30AJ163</b>	65	17	7	41	17.5	149	355	Special alloy steel	GT-NS30 / N30 / NR30 / NB30	360389	
<b>N30AJL</b>	75	17	8	25	19	159	470	Special alloy steel	GT-NS30 / N30 / NR30 / NB30	360170	

>> For guidance on cutting capability, see P231 of the technical material.

Blade with a mark ※ is a quasi-standard.

HAND TOOLS

BITS & SOCKETS

ELECTRIC TOOLS

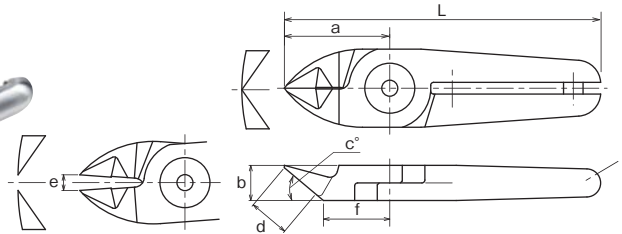
AIR TOOLS

STATIC SOLUTIONS

GASOLINE ENGINE TOOLS

### No. PF Flat blades for plastic

**Plastic** **PF/A** set of blades for cutting plastic gates with cutting end flat. A large R is provided in the cross section for gate cutting in which the cut end must not be left.

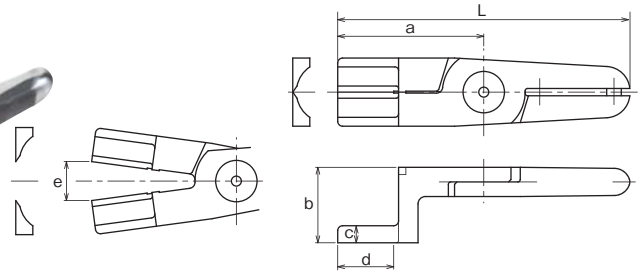


Model No.	Size (mm)							Weight (g)	Material	Applicable models	EDP No.
	a	b	c(°)	d: Effective Length	e: Blade opening	f	L				
<b>N7PF</b>	27	9	40	10.5	4	17	81	80	Special alloy steel	GT-NS7 / N7 / NR7	360127
<b>N10LPF</b>	35	12	40	13.5	5	21	89	120	Special alloy steel	GT-NS10L / NR10L	360183
<b>N20PF</b>	35	12	40	13.5	11	21	95	130	Special alloy steel	GT-NS20 / N20 / NR20 / NB20	360160
<b>N30PF</b>	58	17	30	25	15	33	142	390	Special alloy steel	GT-NS30 / N30 / NR30 / NB30	360167

>> For guidance on cutting capability, see P231 of the technical material.

### No. Quasi-standard products Crank blades for plastic

**Plastic** **AH**/Crank shaped blade for plastic. It is effective when there are obstructions or the gate is narrow.



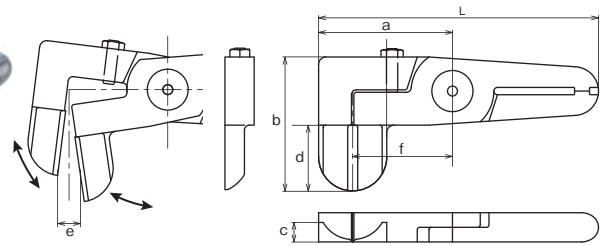
Model No.	Size (mm)							Weight (g)	Material	Applicable models	EDP No.
	a	b	c	d: Effective Length	e: Blade opening	L					
<b>N20AH</b>	60	31	7	23	16	120	240	Special alloy steel	GT-NS20 / N20 / NR20 / NB20	360149	

>> For guidance on cutting capability, see P231 of the technical material.

### No. Quasi-standard products Laterally facing blades for plastics

**Plastic** **AML/AMR** This is a set of blades for plastic where the cutting area is bent 90 degrees. It is useful when it is hard for the nipper to get into, for example, in cramped spaces.

AML AMR

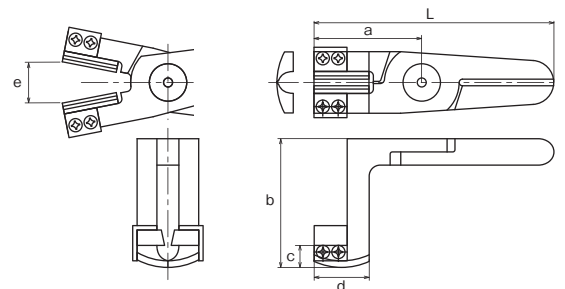


Model No.	Size (mm)							Weight (g)	Material	Applicable models	EDP No.
	a	b	c	d: Effective Length	e: Blade opening	f	L				
<b>N20AML1498</b>	55	55	8	26	9.5	41	115	270	Special alloy steel	GT-NS20 / N20 / NR20 / NB20	360384
<b>N20AMR1499</b>	55	55	8	26	9.5	41	115	270	Special alloy steel	GT-NS20 / N20 / NR20 / NB20	360385

>> For guidance on cutting capability, see P231 of the technical material.

### No. Quasi-standard products Comes with sprue chuck function<sup>①</sup>

**Plastic** With a sprue-chuck function. The urethane rubber on the blade catches a sprue securely in a direct gates application. Cut surface has a big R shape, which can be designed when the cutting edge should not be left.

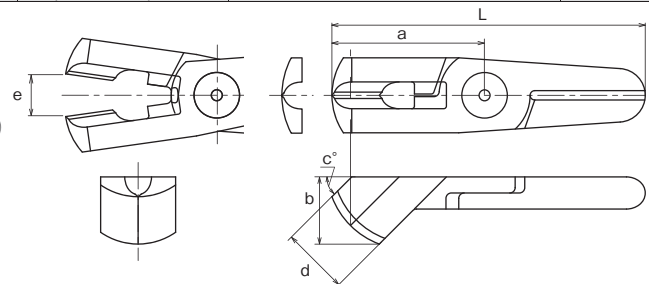


Model No.	Size (mm)							Weight (g)	Material	Applicable models	EDP No.
	a	b	c	d: Effective Length	e: Blade opening	L					
<b>N20AH533</b>	49	58.5	10	25	14	109	280	Special alloy steel	GT-N20 / NS20 / NR20	—	

>> For guidance on cutting capability, see P231 of the technical material.

### No. Quasi-standard products Nipping blades for sprue cut

**Plastic** Perfect spherical set of blades optimal for cutting sprue. The blades can be inserted securely to narrow spaces that have ribs around them and the finish is very clean.



Model No.	Size (mm)							Weight (g)	Material	Applicable models	EDP No.
	a	b	c	d: Effective Length	e: Blade opening	L					
<b>N20AK249</b>	57	25	45	25	14	117	240	Special alloy steel	GT-NS20 / N20 / NR20	—	

>> For guidance on cutting capability, see P231 of the technical material.

## No. GT-H12K/H30/H120K/HS30 Air Scissors

- Two types of blades, standard and micro-edge, are available.



**GT-H12K** Small lightweight type with one fixed blade (Made-to-order)



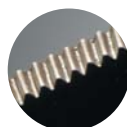
**GT-H120K** With one fixed blade



**GT-H30** Round-Type Double movable blades



**GT-HS30** Square-Type Double movable blades



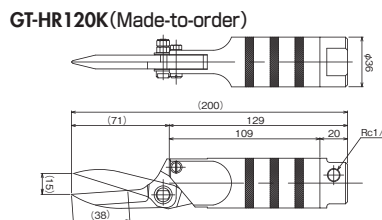
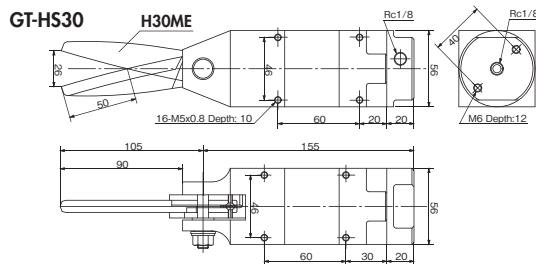
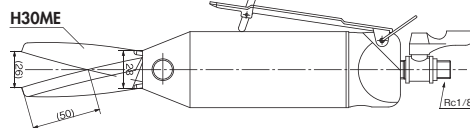
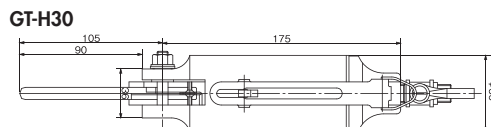
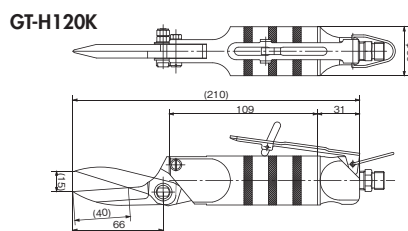
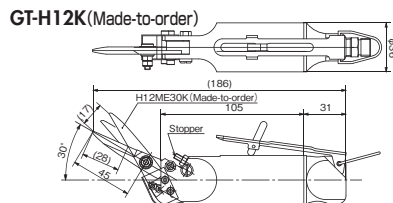
Serrated micro edge

Model No.	Capacity (max) (mm)	Air Consumption (cni/str.)	Applied Pressure (MPa)	Overall Length (with Blade) (mm)	Weight (with Blade) (g)	EDP No.
<b>GT-H30</b>	Kevlar t=1	584	0.3	280	1,030	360211
<b>GT-H12K</b>	Kevlar t=0.3	116	0.2	186.2	290	360201
<b>GT-H120K</b>	Band steel 15x0.5t	116	0.5~0.6	211	340	360202
<b>GT-HS30</b>	Kevlar t=1	584	0.3	260	970	360212

·Hose coupling: R1/4 (Body Rc1/8) ·Air hose inner dia.: 5mm ·Overall length/Weight: Accessories not included.  
·Total length and weight of the GT-HS30 and HS30 are given with the H30ME blade mounted.

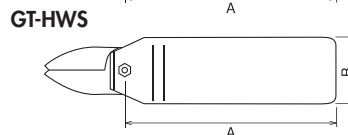
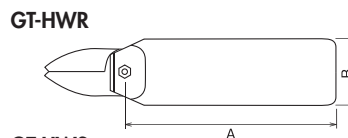
### Blades specifications

Model No.	Applicable Nippers	Blade Shape	Blade Aperture (mm)	Effective Blade Cutting Length (mm)	Weight (g)	EDP No.
<b>H30ME</b>	H30, HS30	Scissors type	26	50	280	360311
<b>H30MEL</b>	H30, HS30	Serrated micro edge	34	67	285	360312
<b>H12ME30K</b>	H12K	Scissors type	17	28	56	360301
<b>H120SK</b>	H120K	Scissors type	15	38	115	360302



## No. GT-HWR1/10 GT-HWS1/10 Double Action Air Scissors

- Blade opening and closing is driven by air piston.
- Having no spring mechanism in the main unit facilitates maintenance.



### Applicable Blade Specifications

Model No.	Blade Opening (mm)	Cutting blade effective (mm)	A (mm)	Weight (g)	EDP No.
For GT-HWR1/HWS1					
<b>HW1J</b>	3.0	17	25	16	360452
For GT-HWS10					
<b>HW10J</b>	5.0	28	40	76	360462



Model No.	Capacity φ (mm)	Air Consumption (cni/str.)	Applied Pressure (N)	Air Pressure (MPa)	A (mm)	B (mm)	Weight (g)	EDP No.	
<b>Double Action Air Scissors (Round Type without Lever)</b>									
<b>GT-HWR1</b>	1.0	0.5	45	294	0.4~0.5	95	20	84	360701
<b>GT-HWR10</b>	1.8	1.2	116	588	0.4~0.5	146	36	295	360714

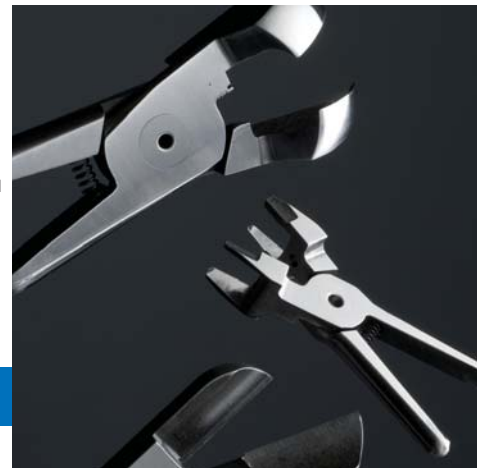
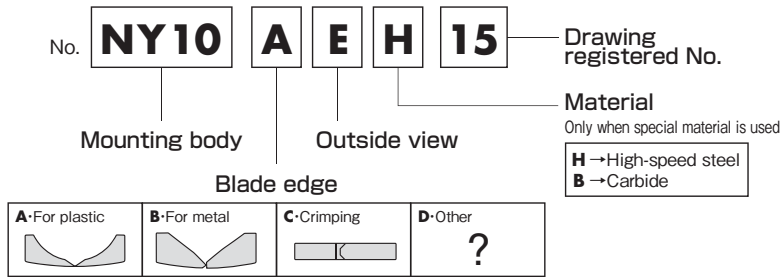
Model No.	Capacity φ (mm)	Air Consumption (cni/str.)	Applied Pressure (N)	Air Pressure (MPa)	A (mm)	B (mm)	Weight (g)	EDP No.	
<b>Double Action Air Scissors (Square Type)</b>									
<b>GT-HWS1</b>	1.0	0.5	45	294	0.4~0.5	95	23x20	116	360700
<b>GT-HWS10</b>	1.8	1.2	116	588	0.4~0.5	146	36	356	360713

※Blades are optional.

VESSEL provides solutions of customized blades for a wide variety of applications.

Custom-made blades are designed flexibly according to a wide range of demands and offered at the minimum cost and lead-time. See the examples below. We accept orders for small quantity as well.

Ref: What the model code stands for



We design your custom-made blades, even from 1 piece!

## Type for blades

<b>A</b> Angled	<b>B</b> Angled	<b>C</b> Crimping	<b>D</b> Mounted gate
<b>E</b> Disposable gate treatment	<b>F</b> Power cutting	<b>G</b> Punching	<b>H</b> Crankshaft
<b>I</b> Pilers type	<b>J(JL)</b> Long blade for plastic Straight Long blade For product which are vertically long and to which a nipper does not reach with an ordinary blade.	<b>K</b> L-shaped (disposable gate treatment)	<b>L</b> L-shaped
<b>M/XL/XR</b> Side opening blades	<b>TN</b> Tube cutting	<b>VO</b> Nail pulling	<b>DI</b> Bending
<b>VHA</b> Scissors	Cutting of stranded wire      Film gate	Direct gate Sprue is equal to a gate.	<b>AHE</b> Pin gate treatment ...Treatment of small gates which should be automatically cut at de-gating.
<b>AHW</b> Double blades	<b>NH</b> Double heating blades		